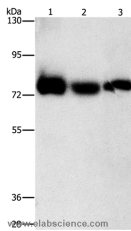


AMPD1 Polyclonal Antibody

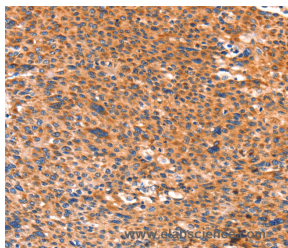
Catalog No.	E-AB-12967	Reactivity	H
Storage	Store at -20°C. Avoid freeze / thaw cycles.	Host	Rabbit
Applications	WB,IHC,ELISA	Isotype	IgG

Note: Centrifuge before opening to ensure complete recovery of vial contents.

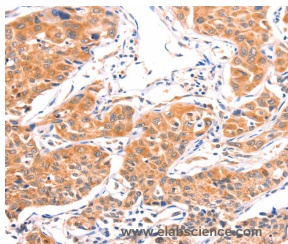
Images



Western Blot analysis of Human fetal muscle tissue, K562 and hela cell using AMPD1 Polyclonal Antibody at dilution of 1:1600



Immunohistochemistry of paraffin-embedded Human liver cancer using AMPD1 Polyclonal Antibody at dilution of 1:80



Immunohistochemistry of paraffin-embedded Human lung cancer using AMPD1 Polyclonal Antibody at dilution of 1:80

Immunogen Information

Immunogen	Synthetic peptide of human AMPD1
Gene Accession	NP_000027
Swissprot	P23109
Synonyms	MAD,MADA

Product Information

Calculated MW	90kDa
Buffer	PBS with 0.05% sodium azide and 50% glycerol, PH7.4
Purify	Affinity purification
Dilution	WB 1:1000-1:5000, IHC 1:100-1:300

Background

Adenosine monophosphate deaminase 1 catalyzes the deamination of AMP to IMP in skeletal muscle and plays an important role in the purine nucleotide cycle. Two other genes have been identified, AMPD2 and AMPD3, for the liver- and erythrocyte-specific isoforms, respectively. Deficiency of the muscle-specific enzyme is apparently a common cause of exercise-induced myopathy and probably the most common cause of metabolic myopathy in the human. Alternatively spliced transcript variants encoding different isoforms have been identified in this gene.

For Research Use Only

Thank you for your recent purchase.
 If you would like to learn more about antibodies, please visit www.elabscience.com.

**Focus on your research
 Service for life science**

Applications:WB-Western Blot IHC-Immunohistochemistry IF-Immunofluorescence IP-Immunoprecipitation FC-Flow cytometry ChIP-Chromatin Immunoprecipitation Reactivity: H-Human R-Rat M-Mouse Mk-Monkey Dg-Dog Ch-Chicken Hm-Hamster Rb-Rabbit Sh-Sheep Pg-Pig Z-Zebrafish X-Xenopus C-Cow.