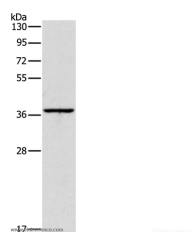


## APOL2 Polyclonal Antibody

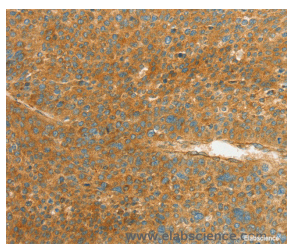
<b>Catalog No.</b>	E-AB-12977	<b>Reactivity</b>	H
<b>Storage</b>	Store at -20°C. Avoid freeze / thaw cycles.	<b>Host</b>	Rabbit
<b>Applications</b>	WB,IHC,ELISA	<b>Isotype</b>	IgG

**Note:** Centrifuge before opening to ensure complete recovery of vial contents.

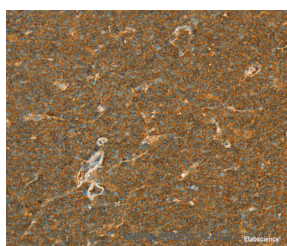
### Images



Western Blot analysis of Huvec cell using APOL2 Polyclonal Antibody at dilution of 1:375



Immunohistochemistry of paraffin-embedded Human liver cancer using APOL2 Polyclonal Antibody at dilution of 1:80



Immunohistochemistry of paraffin-embedded Human lymphoma using APOL2 Polyclonal Antibody at dilution of 1:80

### Immunogen Information

<b>Immunogen</b>	Synthetic peptide of human APOL2
<b>Gene Accession</b>	NP_112092
<b>Swissprot</b>	Q9BQE5
<b>Synonyms</b>	APOL3,APOL-II

### Product Information

<b>Calculated MW</b>	37kDa
<b>Buffer</b>	PBS with 0.05% sodium azide and 50% glycerol, PH7.4
<b>Purify</b>	Affinity purification
<b>Dilution</b>	WB 1:200-1:1000, IHC 1:100-1:300

### Background

This gene is a member of the apolipoprotein L gene family. The encoded protein is found in the cytoplasm, where it may affect the movement of lipids or allow the binding of lipids to organelles. Two transcript variants encoding the same protein have been found for this gene.

#### For Research Use Only

Thank you for your recent purchase.  
 If you would like to learn more about antibodies, please visit [www.elabscience.com](http://www.elabscience.com).

**Focus on your research**  
**Service for life science**

Applications:WB-Western Blot IHC-Immunohistochemistry IF-Immunofluorescence IP-Immunoprecipitation FC-Flow cytometry ChIP-Chromatin Immunoprecipitation Reactivity: H-Human R-Rat M-Mouse Mk-Monkey Dg-Dog Ch-Chicken Hm-Hamster Rb-Rabbit Sh-Sheep Pg-Pig Z-Zebrafish X-Xenopus C-Cow.