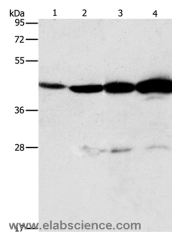


APOBEC3D Polyclonal Antibody

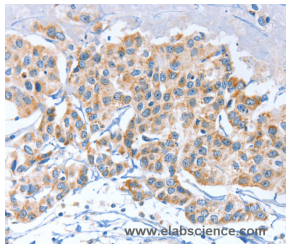
Catalog No.	E-AB-12980	Reactivity	H
Storage	Store at -20°C. Avoid freeze / thaw cycles.	Host	Rabbit
Applications	WB,IHC,ELISA	Isotype	IgG

Note: Centrifuge before opening to ensure complete recovery of vial contents.

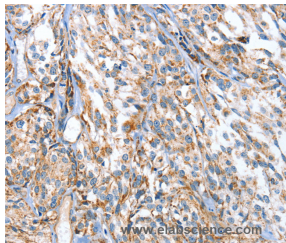
Images



Western Blot analysis of Mouse thymus tissue and A549 cell, Lovo and K562 cell using APOBEC3D Polyclonal Antibody at dilution of 1:580



Immunohistochemistry of paraffin-embedded Human breast cancer using APOBEC3D Polyclonal Antibody at dilution of 1:80



Immunohistochemistry of paraffin-embedded Human esophagus cancer using APOBEC3D Polyclonal Antibody at dilution of 1:80

Immunogen Information

Immunogen	Synthetic peptide of human APOBEC3D
Gene Accession	NP_689639
Swissprot	Q96AK3
Synonyms	A3D,ARP6,APOBEC3E,APOBEC3DE

Product Information

Calculated MW	47kDa
Buffer	PBS with 0.05% sodium azide and 50% glycerol, PH7.4
Purify	Affinity purification
Dilution	WB 1:500-1:2000, IHC 1:50-1:200

Background

This gene is a member of the cytidine deaminase gene family. It is one of a group of related genes found in a cluster, thought to result from gene duplication, on chromosome 22. Members of the cluster encode proteins that are structurally and functionally related to the C to U RNA-editing cytidine deaminase APOBEC1 and inhibit retroviruses, such as HIV, by deaminating cytosine residues in nascent retroviral cDNA.

For Research Use Only

Thank you for your recent purchase.
 If you would like to learn more about antibodies, please visit www.elabscience.com.

**Focus on your research
 Service for life science**

Applications:WB-Western Blot IHC-Immunohistochemistry IF-Immunofluorescence IP-Immunoprecipitation FC-Flow cytometry ChIP-Chromatin Immunoprecipitation Reactivity: H-Human R-Rat M-Mouse Mk-Monkey Dg-Dog Ch-Chicken Hm-Hamster Rb-Rabbit Sh-Sheep Pg-Pig Z-Zebrafish X-Xenopus C-Cow.