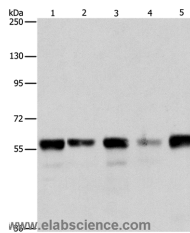


ARIH2 Polyclonal Antibody

Catalog No.	E-AB-12985	Reactivity	H,M
Storage	Store at -20°C. Avoid freeze / thaw cycles.	Host	Rabbit
Applications	WB,ELISA	Isotype	IgG

Note: Centrifuge before opening to ensure complete recovery of vial contents.

Images



Western Blot analysis of HeLa, Jurkat, 293T and K562 cell, Mouse testis tissue using ARIH2 Polyclonal Antibody at dilution of 1:550

Immunogen Information

Immunogen	Synthetic peptide of human ARIH2
Gene Accession	NP_006312
Swissprot	O95376
Synonyms	ARI2,TRIAD1

Product Information

Calculated MW	58kDa
Buffer	PBS with 0.05% sodium azide and 50% glycerol, PH7.4
Purify	Affinity purification
Dilution	WB 1:500-1:2000

Background

TRIAD1, also known as ARIH2 (ariadne homolog 2) or ARI2, is a 493 amino acid protein that contains one IBR-type zinc finger and two RING-type zinc fingers and belongs to the ariadne subfamily of RBR proteins. Localized to the nucleus, TRIAD1 interacts with UBE2L3 and is thought to act as an E3 ubiquitin-protein ligase, functioning to accept ubiquitin from E2 ubiquitin-conjugating enzymes and transfer the acquired ubiquitin residue to target substrates. TRIAD1 is subject to post-translational DNA damage-dependent phosphorylation, probably by ATM or ATR. The gene encoding TRIAD1 maps to human chromosome 3, which houses over 1,100 genes, including a chemokine receptor (CKR) gene cluster and a variety of human cancer-related gene loci.

For Research Use Only

Thank you for your recent purchase.
 If you would like to learn more about antibodies, please visit www.elabscience.com.

**Focus on your research
 Service for life science**

Applications:WB-Western Blot IHC-Immunohistochemistry IF-Immunofluorescence IP-Immunoprecipitation FC-Flow cytometry ChIP-Chromatin Immunoprecipitation Reactivity: H-Human R-Rat M-Mouse Mk-Monkey Dg-Dog Ch-Chicken Hm-Hamster Rb-Rabbit Sh-Sheep Pg-Pig Z-Zebrafish X-Xenopus C-Cow.