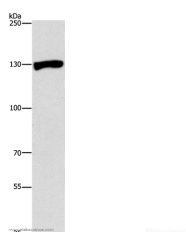


UPF1 Polyclonal Antibody

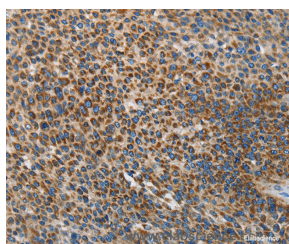
Catalog No.	E-AB-13000	Reactivity	H,M
Storage	Store at -20°C. Avoid freeze / thaw cycles.	Host	Rabbit
Applications	WB,IHC,ELISA	Isotype	IgG

Note: Centrifuge before opening to ensure complete recovery of vial contents.

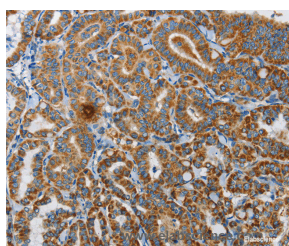
Images



Western Blot analysis of Raji cell using UPF1 Polyclonal Antibody at dilution of 1:300



Immunohistochemistry of paraffin-embedded Human liver cancer using UPF1 Polyclonal Antibody at dilution of 1:35



Immunohistochemistry of paraffin-embedded Human thyroid cancer using UPF1 Polyclonal Antibody at dilution of 1:35

Immunogen Information

Immunogen	Synthetic peptide of human UPF1
Gene Accession	NP_002902
Swissprot	Q92900
Synonyms	HUPF1,NORF1,RENT1,smg-2,pNORF1

Product Information

Calculated MW	124kDa
Buffer	PBS with 0.05% sodium azide and 50% glycerol, PH7.4
Purify	Affinity purification
Dilution	WB 1:200-1:1000, IHC 1:50-1:200

Background

This gene encodes a protein that is part of a post-splicing multiprotein complex involved in both Human, Mouse RNA nuclear export and mRNA surveillance. mRNA surveillance detects exported mRNAs with truncated open reading frames and initiates nonsense-mediated mRNA decay (NMD). When translation ends upstream from the last exon-exon junction, this triggers NMD to degrade mRNAs containing premature stop codons. This protein is located only in the cytoplasm. When translation ends, it interacts with the protein that is a functional homolog of yeast Upf2p to trigger mRNA decapping. Use of multiple polyadenylation sites has been noted for this gene.

For Research Use Only

Thank you for your recent purchase.
 If you would like to learn more about antibodies, please visit www.elabscience.com.

**Focus on your research
 Service for life science**

Applications: WB-Western Blot IHC-Immunohistochemistry IF-Immunofluorescence IP-Immunoprecipitation FC-Flow cytometry ChIP-Chromatin Immunoprecipitation Reactivity: H-Human R-Rat M-Mouse Mk-Monkey Dg-Dog Ch-Chicken Hm-Hamster Rb-Rabbit Sh-Sheep Pg-Pig Z-Zebrafish X-Xenopus C-Cow.