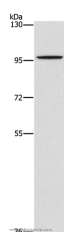


## PDE6C Polyclonal Antibody

<b>Catalog No.</b>	E-AB-13032	<b>Reactivity</b>	H
<b>Storage</b>	Store at -20°C. Avoid freeze / thaw cycles.	<b>Host</b>	Rabbit
<b>Applications</b>	WB,ELISA	<b>Isotype</b>	IgG

**Note:** Centrifuge before opening to ensure complete recovery of vial contents.

### Images



Western Blot analysis of A172 cell using PDE6C Polyclonal Antibody at dilution of 1:1400

### Immunogen Information

<b>Immunogen</b>	Synthetic peptide of human PDE6C
<b>Gene Accession</b>	NP_006195
<b>Swissprot</b>	P51160
<b>Synonyms</b>	COD4,ACHM5,PDEA2

### Product Information

<b>Calculated MW</b>	99kDa
<b>Buffer</b>	PBS with 0.05% sodium azide and 50% glycerol, PH7.4
<b>Purify</b>	Affinity purification
<b>Dilution</b>	WB 1:500-1:2000

### Background

Cone cGMP-specific 3',5'-cyclic phosphodiesterase subunit alpha' is an enzyme that in humans is encoded by the PDE6C gene. This gene encodes the alpha-prime subunit of cone phosphodiesterase, which is composed of a homodimer of two alpha-prime subunits and 3 smaller proteins of 11, 13, and 15 kDa. Mutations in this gene are associated with cone dystrophy type 4 (COD4).

#### For Research Use Only

Thank you for your recent purchase.

If you would like to learn more about antibodies, please visit [www.elabscience.com](http://www.elabscience.com).

**Focus on your research  
 Service for life science**

Applications:WB-Western Blot IHC-Immunohistochemistry IF-Immunofluorescence IP-Immunoprecipitation FC-Flow cytometry ChIP-Chromatin Immunoprecipitation Reactivity: H-Human R-Rat M-Mouse Mk-Monkey Dg-Dog Ch-Chicken Hm-Hamster Rb-Rabbit Sh-Sheep Pg-Pig Z-Zebrafish X-Xenopus C-Cow.