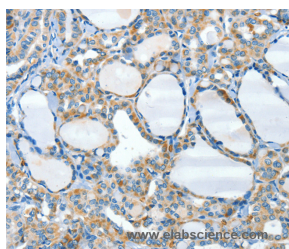


## HID1 Polyclonal Antibody

<b>Catalog No.</b>	E-AB-13164	<b>Reactivity</b>	H,M
<b>Storage</b>	Store at -20°C. Avoid freeze / thaw cycles.	<b>Host</b>	Rabbit
<b>Applications</b>	IHC,ELISA	<b>Isotype</b>	IgG

**Note:** Centrifuge before opening to ensure complete recovery of vial contents.

### Images



Immunohistochemistry of paraffin-embedded Human thyroid cancer tissue using HID1 Polyclonal Antibody at dilution 1:50

### Immunogen Information

<b>Immunogen</b>	Synthetic peptide of human HID1
<b>Gene Accession</b>	NP_085133
<b>Swissprot</b>	Q8IV36
<b>Synonyms</b>	DMC1,HID-1,C17orf28

### Product Information

<b>Buffer</b>	PBS with 0.05% sodium azide and 50% glycerol, PH7.4
<b>Purify</b>	Affinity purification
<b>Dilution</b>	IHC 1:25-1:100

### Background

C17orf28 (chromosome 17 open reading frame 28) is a 788 amino acid multi-pass membrane protein that is expressed in heart, skeletal muscle, colon, spleen, kidney, liver, small intestine and lung. C17orf28 may be involved in the development of cancers in a broad range of tissues. Existing as three alternatively spliced isoforms, C17orf28 is encoded by a gene mapping to human chromosome 17, which Human, Mouse makes up over 2.5% of the human genome with about 81 million bases encoding over 1,200 genes. Two key tumor suppressor genes are associated with chromosome 17, namely, p53 and BRCA1.

#### For Research Use Only

Thank you for your recent purchase.  
 If you would like to learn more about antibodies, please visit [www.elabscience.com](http://www.elabscience.com).

**Focus on your research  
 Service for life science**

Applications: WB-Western Blot IHC-Immunohistochemistry IF-Immunofluorescence IP-Immunoprecipitation FC-Flow cytometry ChIP-Chromatin Immunoprecipitation Reactivity: H-Human R-Rat M-Mouse Mk-Monkey Dg-Dog Ch-Chicken Hm-Hamster Rb-Rabbit Sh-Sheep Pg-Pig Z-Zebrafish X-Xenopus C-Cow.