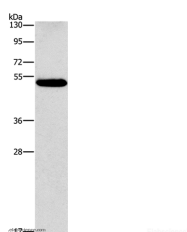


## CALCRL Polyclonal Antibody

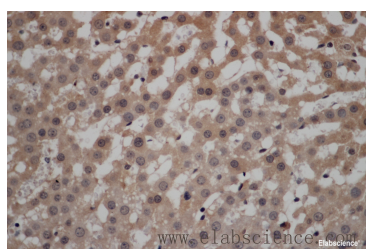
<b>Catalog No.</b>	E-AB-13173	<b>Reactivity</b>	H
<b>Storage</b>	Store at -20°C. Avoid freeze / thaw cycles.	<b>Host</b>	Rabbit
<b>Applications</b>	WB,IHC,ELISA	<b>Isotype</b>	IgG

**Note:** Centrifuge before opening to ensure complete recovery of vial contents.

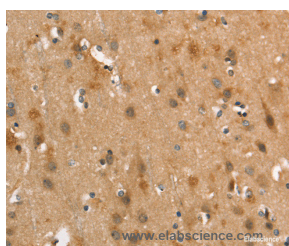
### Images



Western Blot analysis of Human lung cancer tissue using CALCRL Polyclonal Antibody at dilution of 1:550



Immunohistochemistry of paraffin-embedded Rat liver using CALCRL Polyclonal Antibody at dilution of 1:50



Immunohistochemistry of paraffin-embedded Human brain using CALCRL Polyclonal Antibody at dilution of 1:40

### Immunogen Information

<b>Immunogen</b>	Synthetic peptide of human CALCRL
<b>Gene Accession</b>	NP_005786
<b>Swissprot</b>	Q16602
<b>Synonyms</b>	CRLR,CGRPR

### Product Information

<b>Calculated MW</b>	53kDa
<b>Buffer</b>	PBS with 0.05% sodium azide and 50% glycerol, PH7.4
<b>Purify</b>	Affinity purification
<b>Dilution</b>	WB 1:500-1:2000, IHC 1:50-1:200

### Background

Calcitonin receptor-like (CALCRL), also known as the calcitonin receptor-like receptor (CRLR), is a human protein. The protein encoded by the CALCRL gene is a G protein-coupled receptor related to the calcitonin receptor. CALCRL is linked to one of three single transmembrane domain receptor activity-modifying proteins (RAMPs) that are essential for functional activity

#### For Research Use Only

Thank you for your recent purchase.  
 If you would like to learn more about antibodies, please visit [www.elabscience.com](http://www.elabscience.com).

**Focus on your research**  
**Service for life science**

Applications:WB-Western Blot IHC-Immunohistochemistry IF-Immunofluorescence IP-Immunoprecipitation FC-Flow cytometry ChIP-Chromatin Immunoprecipitation Reactivity: H-Human R-Rat M-Mouse Mk-Monkey Dg-Dog Ch-Chicken Hm-Hamster Rb-Rabbit Sh-Sheep Pg-Pig Z-Zebrafish X-Xenopus C-Cow.