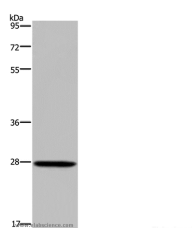


## KLK14 Polyclonal Antibody

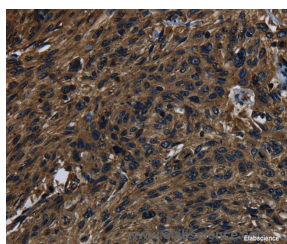
<b>Catalog No.</b>	E-AB-13367	<b>Reactivity</b>	H,M
<b>Storage</b>	Store at -20°C. Avoid freeze / thaw cycles.	<b>Host</b>	Rabbit
<b>Applications</b>	WB,IHC,ELISA	<b>Isotype</b>	IgG

**Note:** Centrifuge before opening to ensure complete recovery of vial contents.

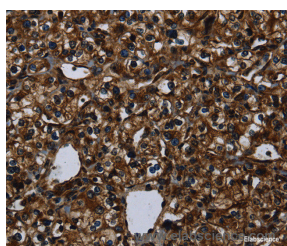
### Images



Western Blot analysis of Mouse spleen tissue using KLK14 Polyclonal Antibody at dilution of 1:300



Immunohistochemistry of paraffin-embedded Human esophagus cancer using KLK14 Polyclonal Antibody at dilution of 1:40



Immunohistochemistry of paraffin-embedded Human prostate cancer using KLK14 Polyclonal Antibody at dilution of 1:40

### Immunogen Information

<b>Immunogen</b>	Synthetic peptide of human KLK14
<b>Gene Accession</b>	NP_071329
<b>Swissprot</b>	Q9P0G3
<b>Synonyms</b>	KLK-L6

### Product Information

<b>Calculated MW</b>	29kDa
<b>Buffer</b>	PBS with 0.05% sodium azide and 50% glycerol, PH7.4
<b>Purify</b>	Affinity purification
<b>Dilution</b>	WB 1:200-1:1000, IHC 1:50-1:200

### Background

Kallikreins are a subgroup of serine proteases having diverse physiological functions. Growing evidence suggests that many kallikreins are implicated in carcinogenesis and some have potential as novel cancer and other disease biomarkers. This gene is one of the fifteen kallikrein subfamily members located in a cluster on chromosome 19. An additional transcript variant has been described but its full length nature has not been determined.

#### For Research Use Only

Thank you for your recent purchase.  
 If you would like to learn more about antibodies, please visit [www.elabscience.com](http://www.elabscience.com).

**Focus on your research  
 Service for life science**

Applications:WB-Western Blot IHC-Immunohistochemistry IF-Immunofluorescence IP-Immunoprecipitation FC-Flow cytometry ChIP-Chromatin Immunoprecipitation Reactivity: H-Human R-Rat M-Mouse Mk-Monkey Dg-Dog Ch-Chicken Hm-Hamster Rb-Rabbit Sh-Sheep Pg-Pig Z-Zebrafish X-Xenopus C-Cow.