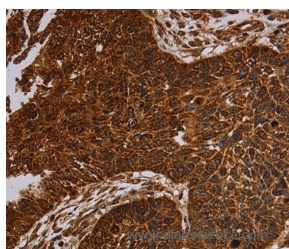


NDUFAB1 Polyclonal Antibody

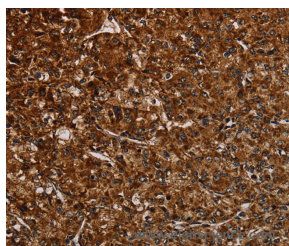
Catalog No.	E-AB-13443	Reactivity	H,M
Storage	Store at -20°C. Avoid freeze / thaw cycles.	Host	Rabbit
Applications	IHC,ELISA	Isotype	IgG

Note: Centrifuge before opening to ensure complete recovery of vial contents.

Images



Immunohistochemistry of paraffin-embedded Human lung cancer tissue using NDUFAB1 Polyclonal Antibody at dilution 1:50



Immunohistochemistry of paraffin-embedded Human prostate cancer tissue using NDUFAB1 Polyclonal Antibody at dilution 1:50

Immunogen Information

Immunogen	Synthetic peptide of human NDUFAB1
Gene Accession	NP_004994
Swissprot	O14561
Synonyms	ACP,SDAP,FASN2A

Product Information

Buffer	PBS with 0.05% sodium azide and 50% glycerol, PH7.4
Purify	Affinity purification
Dilution	IHC 1:100-1:300

Background

NDUFAB1 (NADH dehydrogenase (ubiquinone) 1, alpha/beta subcomplex, 1), also known as SDAP, ACP (acyl carrier protein) or FASN2A, is one of about 45 subunits comprising Complex I of the oxidative phosphorylation electron transport chain. Consisting of 156 amino acids and localizing to mitochondria, NDUFAB1 functions as an accessory subunit of the multi-protein mitochondrial membrane respiratory chain NADH dehydrogenase complex (known as Complex I). Complex I plays an important role in the transfer of electrons from NADH to the respiratory chain, a process that is essential for cellular respiration. NDUFAB1 contains one acyl carrier domain and is encoded by a gene that maps to human chromosome 16p12.2 and mouse chromosome 7 F3.

For Research Use Only

Thank you for your recent purchase.
 If you would like to learn more about antibodies, please visit www.elabscience.com.

**Focus on your research
 Service for life science**

Applications:WB-Western Blot IHC-Immunohistochemistry IF-Immunofluorescence IP-Immunoprecipitation FC-Flow cytometry ChIP-Chromatin Immunoprecipitation Reactivity: H-Human R-Rat M-Mouse Mk-Monkey Dg-Dog Ch-Chicken Hm-Hamster Rb-Rabbit Sh-Sheep Pg-Pig Z-Zebrafish X-Xenopus C-Cow.