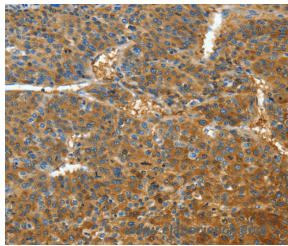


TNFSF13B Polyclonal Antibody

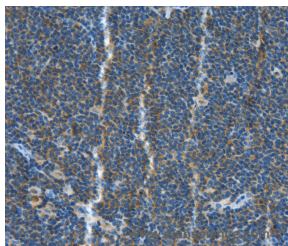
Catalog No.	E-AB-13947	Reactivity	H
Storage	Store at -20°C. Avoid freeze / thaw cycles.	Host	Rabbit
Applications	IHC,ELISA	Isotype	IgG

Note: Centrifuge before opening to ensure complete recovery of vial contents.

Images



Immunohistochemistry of paraffin-embedded Human liver cancer tissue using TNFSF13B Polyclonal Antibody at dilution 1:30



Immunohistochemistry of paraffin-embedded Human lymphoma tissue using TNFSF13B Polyclonal Antibody at dilution 1:30

Immunogen Information

Immunogen	Recombinant protein of human TNFSF13B
Gene Accession	BC020674
Swissprot	Q9Y275
Synonyms	DTL,BAFF,BLYS,CD257,TALL1,THANK,ZTNF4,TALL-1,TNFSF20

Product Information

Buffer	PBS with 0.05% sodium azide and 50% glycerol, PH7.4
Purify	Affinity purification
Dilution	IHC 1:50-1:200

Background

The protein encoded by this gene is a cytokine that belongs to the tumor necrosis factor (TNF) ligand family. This cytokine is a ligand for receptors TNFRSF13B/TACI, TNFRSF17/BCMA, and TNFRSF13C/BAFFR. This cytokine is expressed in B cell lineage cells, and acts as a potent B cell activator. It has been also shown to play an important role in the proliferation and differentiation of B cells. Alternatively spliced transcript variants encoding distinct isoforms have been identified.

For Research Use Only

Thank you for your recent purchase.
 If you would like to learn more about antibodies, please visit www.elabscience.com.

**Focus on your research
 Service for life science**

Applications:WB-Western Blot IHC-Immunohistochemistry IF-Immunofluorescence IP-Immunoprecipitation FC-Flow cytometry ChIP-Chromatin Immunoprecipitation Reactivity: H-Human R-Rat M-Mouse Mk-Monkey Dg-Dog Ch-Chicken Hm-Hamster Rb-Rabbit Sh-Sheep Pg-Pig Z-Zebrafish X-Xenopus C-Cow.