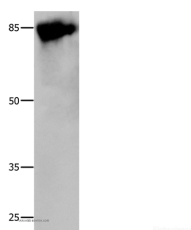


## Caldesmon Polyclonal Antibody

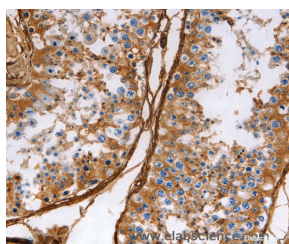
<b>Catalog No.</b>	E-AB-13956	<b>Reactivity</b>	H,R
<b>Storage</b>	Store at -20°C. Avoid freeze / thaw cycles.	<b>Host</b>	Rabbit
<b>Applications</b>	WB,IHC,ELISA	<b>Isotype</b>	IgG

**Note:** Centrifuge before opening to ensure complete recovery of vial contents.

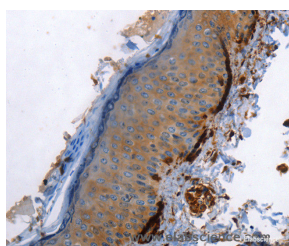
### Images



Western Blot analysis of 293T cell using Caldesmon Polyclonal Antibody at dilution of 1:800



Immunohistochemistry of paraffin-embedded Human testis using Caldesmon Polyclonal Antibody at dilution of 1:40



Immunohistochemistry of paraffin-embedded Human skin using Caldesmon Polyclonal Antibody at dilution of 1:40

### Immunogen Information

<b>Immunogen</b>	Recombinant protein of human Caldesmo
<b>Gene Accession</b>	BC040354
<b>Swissprot</b>	Q05682
<b>Synonyms</b>	CDM,HCAD,LCAD,H-CAD,L-CAD,NAG22

### Product Information

<b>Calculated MW</b>	63kDa
<b>Buffer</b>	PBS with 0.05% sodium azide and 50% glycerol, PH7.4
<b>Purify</b>	Affinity purification
<b>Dilution</b>	WB 1:1000-1:5000, IHC 1:50-1:150

### Background

This gene encodes a calmodulin- and actin-binding protein that plays an essential role in the regulation of smooth muscle and nonmuscle contraction. The conserved domain of this protein possesses the binding activities to Ca(2+)-calmodulin, actin, tropomyosin, myosin, and phospholipids. This protein is a potent inhibitor of the actin-tropomyosin activated myosin MgATPase, and serves as a mediating factor for Ca(2+)-dependent inhibition of smooth muscle contraction. Alternative splicing of this gene results in multiple transcript variants encoding distinct isoforms.

#### For Research Use Only

Thank you for your recent purchase.  
 If you would like to learn more about antibodies, please visit [www.elabscience.com](http://www.elabscience.com).

**Focus on your research**  
**Service for life science**

Applications:WB-Western Blot IHC-Immunohistochemistry IF-Immunofluorescence IP-Immunoprecipitation FC-Flow cytometry ChIP-Chromatin Immunoprecipitation Reactivity: H-Human R-Rat M-Mouse Mk-Monkey Dg-Dog Ch-Chicken Hm-Hamster Rb-Rabbit Sh-Sheep Pg-Pig Z-Zebrafish X-Xenopus C-Cow.