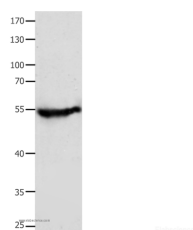


CAP2 Polyclonal Antibody

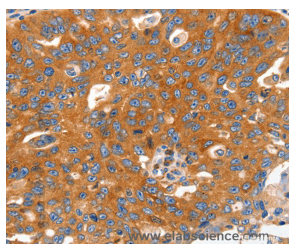
Catalog No.	E-AB-13963	Reactivity	H,M,R
Storage	Store at -20°C. Avoid freeze / thaw cycles.	Host	Rabbit
Applications	WB,IHC,ELISA	Isotype	IgG

Note: Centrifuge before opening to ensure complete recovery of vial contents.

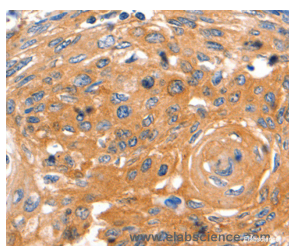
Images



Western Blot analysis of Human fetal muscle tissue using CAP2 Polyclonal Antibody at dilution of 1:700



Immunohistochemistry of paraffin-embedded Human ovarian cancer using CAP2 Polyclonal Antibody at dilution of 1:60



Immunohistochemistry of paraffin-embedded Human cervical cancer using CAP2 Polyclonal Antibody at dilution of 1:60

Immunogen Information

Immunogen	Recombinant protein of human CAP2
Gene Accession	BC008481
Swissprot	P40123
Synonyms	2810452G09Rik,adenylate cyclase associated protein 2,Adenylyl cyclase associated protein 2,CAP 2,CAP adenylate cyclase-associated protein 2,CAP,cap2,CAP2

Product Information

Calculated MW	53kDa
Buffer	PBS with 0.05% sodium azide and 50% glycerol, PH7.4
Purify	Affinity purification
Dilution	WB 1:500-1:2000, IHC 1:60-1:200

Background

This gene was identified by its similarity to the gene for human adenylyl cyclase-associated protein. The function of the protein encoded by this gene is unknown. However, the protein appears to be able to interact with adenylyl cyclase-associated protein and actin.

For Research Use Only

Thank you for your recent purchase.
 If you would like to learn more about antibodies, please visit www.elabscience.com.

Focus on your research
Service for life science

Applications:WB-Western Blot IHC-Immunohistochemistry IF-Immunofluorescence IP-Immunoprecipitation FC-Flow cytometry ChIP-Chromatin Immunoprecipitation Reactivity: H-Human R-Rat M-Mouse Mk-Monkey Dg-Dog Ch-Chicken Hm-Hamster Rb-Rabbit Sh-Sheep Pg-Pig Z-Zebrafish X-Xenopus C-Cow.