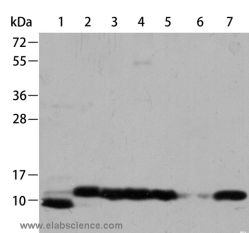


CYCS Polyclonal Antibody

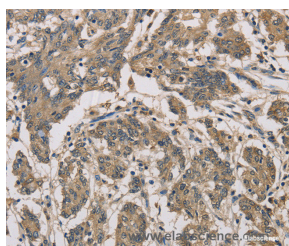
Catalog No.	E-AB-14032	Reactivity	H,M,R
Storage	Store at -20°C. Avoid freeze / thaw cycles.	Host	Rabbit
Applications	WB,IHC,ELISA	Isotype	IgG

Note: Centrifuge before opening to ensure complete recovery of vial contents.

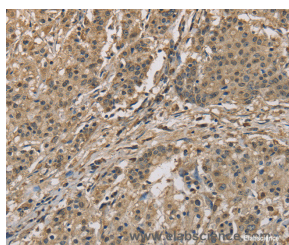
Images



Western Blot analysis of HeLa, K562 cell, Mouse brain, heart and kidney tissue, PC3 and Jurkat cell using CYCS Polyclonal Antibody at dilution of 1:700



Immunohistochemistry of paraffin-embedded Human colon cancer using CYCS Polyclonal Antibody at dilution of 1:70



Immunohistochemistry of paraffin-embedded Human gastric cancer using CYCS Polyclonal Antibody at dilution of 1:70

Immunogen Information

Immunogen	Recombinant protein of human CYCS
Gene Accession	BC015130
Swissprot	P99999
Synonyms	CYC,HCS,THC4

Product Information

Calculated MW	12kDa
Buffer	PBS with 0.05% sodium azide and 50% glycerol, PH7.4
Purify	Affinity purification
Dilution	WB 1:500-1:2000, IHC 1:100-1:300

Background

This gene encodes a small heme protein that functions as a central component of the electron transport chain in mitochondria. The encoded protein associates with the inner membrane of the mitochondrion where it accepts electrons from cytochrome b and transfers them to the cytochrome oxidase complex. This protein is also involved in initiation of apoptosis. Mutations in this gene are associated with autosomal dominant nonsyndromic thrombocytopenia. Numerous processed pseudogenes of this gene are found throughout the human genome.

For Research Use Only

Thank you for your recent purchase.
 If you would like to learn more about antibodies, please visit www.elabscience.com.

**Focus on your research
 Service for life science**

Applications:WB-Western Blot IHC-Immunohistochemistry IF-Immunofluorescence IP-Immunoprecipitation FC-Flow cytometry ChIP-Chromatin Immunoprecipitation Reactivity: H-Human R-Rat M-Mouse Mk-Monkey Dg-Dog Ch-Chicken Hm-Hamster Rb-Rabbit Sh-Sheep Pg-Pig Z-Zebrafish X-Xenopus C-Cow.