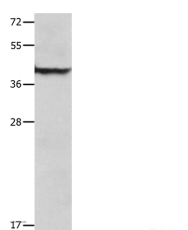


## SERPINB5 Polyclonal Antibody

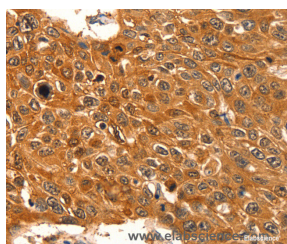
<b>Catalog No.</b>	E-AB-14208	<b>Reactivity</b>	H,M
<b>Storage</b>	Store at -20°C. Avoid freeze / thaw cycles.	<b>Host</b>	Rabbit
<b>Applications</b>	WB,IHC,ELISA	<b>Isotype</b>	IgG

**Note:** Centrifuge before opening to ensure complete recovery of vial contents.

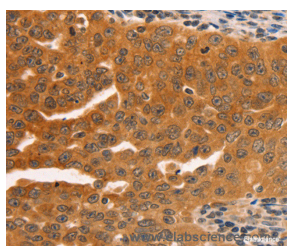
### Images



Western Blot analysis of Mouse lung tissue using SERPINB5 Polyclonal Antibody at dilution of 1:1000



Immunohistochemistry of paraffin-embedded Human esophagus cancer using SERPINB5 Polyclonal Antibody at dilution of 1:60



Immunohistochemistry of paraffin-embedded Human ovarian cancer using SERPINB5 Polyclonal Antibody at dilution of 1:60

### Immunogen Information

<b>Immunogen</b>	Recombinant protein of human SERPINB5
<b>Gene Accession</b>	BC020713
<b>Swissprot</b>	P36952
<b>Synonyms</b>	PI5,maspin

### Product Information

<b>Calculated MW</b>	42kDa
<b>Buffer</b>	PBS with 0.05% sodium azide and 50% glycerol, PH7.4
<b>Purify</b>	Affinity purification
<b>Dilution</b>	WB 1:500-1:2000, IHC 1:100-1:300

### Background

Maspin (mammary serine protease inhibitor) also known as serpin B5 is a protein that in humans is encoded by the SERPINB5 gene.[1] This protein belongs to the serpin (serine protease inhibitor) superfamily.[1] SERPINB5 also functions as a tumor suppressor gene in epithelial cells. The expressed protein suppresses the ability of cancer cells to invade and metastasize other tissues. The protein also functions as an angiogenesis inhibitor. It blocks the growth, invasion, and metastatic properties of mammary tumors. As it does not undergo the S (stressed) to R (relaxed) conformational transition characteristic of active serpins, it exhibits no serine protease inhibitory activity.

### For Research Use Only

Thank you for your recent purchase.  
 If you would like to learn more about antibodies, please visit [www.elabscience.com](http://www.elabscience.com).

**Focus on your research**  
**Service for life science**

Applications:WB-Western Blot IHC-Immunohistochemistry IF-Immunofluorescence IP-Immunoprecipitation FC-Flow cytometry ChIP-Chromatin Immunoprecipitation Reactivity: H-Human R-Rat M-Mouse Mk-Monkey Dg-Dog Ch-Chicken Hm-Hamster Rb-Rabbit Sh-Sheep Pg-Pig Z-Zebrafish X-Xenopus C-Cow.