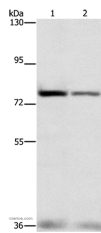


## NFE2L1 Polyclonal Antibody

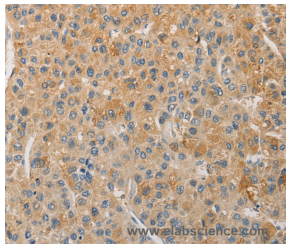
<b>Catalog No.</b>	E-AB-14255	<b>Reactivity</b>	H,M
<b>Storage</b>	Store at -20°C. Avoid freeze / thaw cycles.	<b>Host</b>	Rabbit
<b>Applications</b>	WB,IHC,ELISA	<b>Isotype</b>	IgG

**Note:** Centrifuge before opening to ensure complete recovery of vial contents.

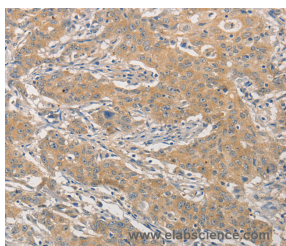
### Images



Western Blot analysis of HepG2 and hela cell using NFE2L1 Polyclonal Antibody at dilution of 1:280



Immunohistochemistry of paraffin-embedded Human liver cancer using NFE2L1 Polyclonal Antibody at dilution of 1:30



Immunohistochemistry of paraffin-embedded Human gastric cancer using NFE2L1 Polyclonal Antibody at dilution of 1:30

### Immunogen Information

<b>Immunogen</b>	Recombinant protein of human NFE2L1
<b>Gene Accession</b>	BC010623
<b>Swissprot</b>	Q14494
<b>Synonyms</b>	NRF1,TCF11,LCR-F1

### Product Information

<b>Calculated MW</b>	85kDa
<b>Buffer</b>	PBS with 0.05% sodium azide and 50% glycerol, PH7.4
<b>Purify</b>	Affinity purification
<b>Dilution</b>	WB 1:200-1:1000, IHC 1:25-1:100

### Background

This gene encodes a protein that is involved in globin gene expression in erythrocytes. Confusion has occurred in bibliographic databases due to the shared symbol of NRF1 for this gene, NFE2L1, and for "nuclear respiratory factor 1" which has an official symbol of NRF1.

#### For Research Use Only

Thank you for your recent purchase.  
 If you would like to learn more about antibodies, please visit [www.elabscience.com](http://www.elabscience.com).

**Focus on your research  
 Service for life science**

Applications:WB-Western Blot IHC-Immunohistochemistry IF-Immunofluorescence IP-Immunoprecipitation FC-Flow cytometry ChIP-Chromatin Immunoprecipitation Reactivity: H-Human R-Rat M-Mouse Mk-Monkey Dg-Dog Ch-Chicken Hm-Hamster Rb-Rabbit Sh-Sheep Pg-Pig Z-Zebrafish X-Xenopus C-Cow.