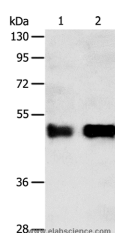


## SERPINA5 Polyclonal Antibody

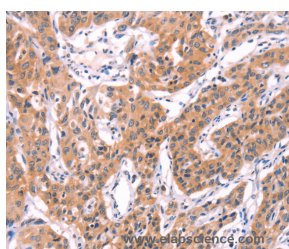
<b>Catalog No.</b>	E-AB-14445	<b>Reactivity</b>	H
<b>Storage</b>	Store at -20°C. Avoid freeze / thaw cycles.	<b>Host</b>	Rabbit
<b>Applications</b>	WB,IHC,ELISA	<b>Isotype</b>	IgG

**Note:** Centrifuge before opening to ensure complete recovery of vial contents.

### Images



Western Blot analysis of Human liver cancer tissue and A549 cell using SERPINA5 Polyclonal Antibody at dilution of 1:750



Immunohistochemistry of paraffin-embedded Human lung cancer using SERPINA5 Polyclonal Antibody at dilution of 1:40

### Immunogen Information

<b>Immunogen</b>	Recombinant protein of human SERPINA5
<b>Gene Accession</b>	BC008915
<b>Swissprot</b>	P05154
<b>Synonyms</b>	PCI,PAI3,PAI-3,PCI-B,PROCI,PLANH3

### Product Information

<b>Calculated MW</b>	46kDa
<b>Buffer</b>	PBS with 0.05% sodium azide and 50% glycerol, PH7.4
<b>Purify</b>	Affinity purification
<b>Dilution</b>	WB 1:1000-1:5000, IHC 1:50-1:200

### Background

The protein encoded by this gene is a member of the serpin family of proteins, a group of proteins that inhibit serine proteases. This gene is one in a cluster of serpin genes located on the q arm of chromosome 14. This family member is a glycoprotein that can inhibit several serine proteases, including protein C and various plasminogen activators and kallikreins, and it thus plays diverse roles in hemostasis and thrombosis in multiple organs.

#### For Research Use Only

Thank you for your recent purchase.  
 If you would like to learn more about antibodies, please visit [www.elabscience.com](http://www.elabscience.com).

**Focus on your research  
 Service for life science**

Applications:WB-Western Blot IHC-Immunohistochemistry IF-Immunofluorescence IP-Immunoprecipitation FC-Flow cytometry ChIP-Chromatin Immunoprecipitation Reactivity: H-Human R-Rat M-Mouse Mk-Monkey Dg-Dog Ch-Chicken Hm-Hamster Rb-Rabbit Sh-Sheep Pg-Pig Z-Zebrafish X-Xenopus C-Cow.