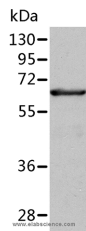


ALDH4A1 Polyclonal Antibody

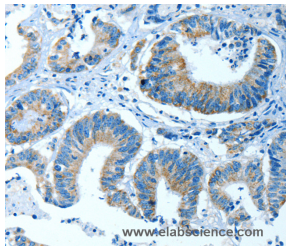
Catalog No.	E-AB-14536	Reactivity	H,M,R
Storage	Store at -20°C. Avoid freeze / thaw cycles.	Host	Rabbit
Applications	WB,IHC,ELISA	Isotype	IgG

Note: Centrifuge before opening to ensure complete recovery of vial contents.

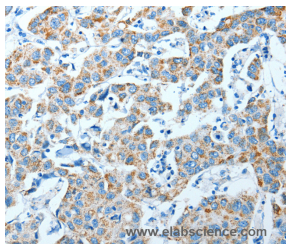
Images



Western Blot analysis of Human fetal liver tissue using ALDH4A1 Polyclonal Antibody at dilution of 1:350



Immunohistochemistry of paraffin-embedded Human colon cancer using ALDH4A1 Polyclonal Antibody at dilution of 1:35



Immunohistochemistry of paraffin-embedded Human breast cancer using ALDH4A1 Polyclonal Antibody at dilution of 1:35

Immunogen Information

Immunogen	Recombinant protein of human ALDH4A1
Gene Accession	BC007581
Swissprot	P30038
Synonyms	P5CD,ALDH4,P5C

Product Information

Calculated MW	62kDa
Buffer	PBS with 0.05% sodium azide and 50% glycerol, PH7.4
Purify	Affinity purification
Dilution	WB 1:500-1:2000, IHC 1:25-1:100

Background

This protein belongs to the aldehyde dehydrogenase family of proteins. This enzyme is a mitochondrial matrix NAD-dependent dehydrogenase which catalyzes the second step of the proline degradation pathway, converting pyrroline-5-carboxylate to glutamate. Deficiency of this enzyme is associated with type II hyperprolinemia, an autosomal recessive disorder characterized by accumulation of delta-1-pyrroline-5-carboxylate (P5C) and proline. Alternatively spliced transcript variants encoding different isoforms have been identified for this gene.

For Research Use Only

Thank you for your recent purchase.
 If you would like to learn more about antibodies, please visit www.elabscience.com.

**Focus on your research
 Service for life science**

Applications:WB-Western Blot IHC-Immunohistochemistry IF-Immunofluorescence IP-Immunoprecipitation FC-Flow cytometry ChIP-Chromatin Immunoprecipitation Reactivity: H-Human R-Rat M-Mouse Mk-Monkey Dg-Dog Ch-Chicken Hm-Hamster Rb-Rabbit Sh-Sheep Pg-Pig Z-Zebrafish X-Xenopus C-Cow.