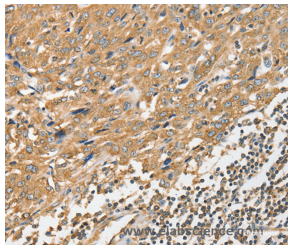


ANGPTL7 Polyclonal Antibody

Catalog No.	E-AB-14566	Reactivity	H,M
Storage	Store at -20°C. Avoid freeze / thaw cycles.	Host	Rabbit
Applications	IHC,ELISA	Isotype	IgG

Note: Centrifuge before opening to ensure complete recovery of vial contents.

Images



Immunohistochemistry of paraffin-embedded Human esophagus cancer tissue using ANGPTL7 Polyclonal Antibody at dilution 1:40

Immunogen Information

Immunogen	Recombinant protein of human ANGPTL7
Gene Accession	BC001881
Swissprot	O43827
Synonyms	AngX,CDT6,dJ647M16.1,RP4-647M16.2

Product Information

Buffer	PBS with 0.05% sodium azide and 50% glycerol, PH7.4
Purify	Affinity purification
Dilution	IHC 1:50-1:200

Background

Angiopoietin-related protein 7 is a protein that in humans is encoded by the ANGPTL7 gene, a member of the ANGPTL family. Highly and specifically expressed in the cornea where is confined to the stromal layer.

For Research Use Only

Thank you for your recent purchase.
 If you would like to learn more about antibodies, please visit www.elabscience.com.

**Focus on your research
 Service for life science**

Applications:WB-Western Blot IHC-Immunohistochemistry IF-Immunofluorescence IP-Immunoprecipitation FC-Flow cytometry ChIP-Chromatin Immunoprecipitation Reactivity: H-Human R-Rat M-Mouse Mk-Monkey Dg-Dog Ch-Chicken Hm-Hamster Rb-Rabbit Sh-Sheep Pg-Pig Z-Zebrafish X-Xenopus C-Cow.