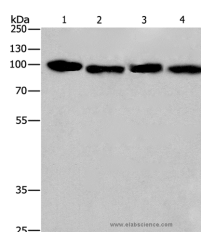


CANX Polyclonal Antibody

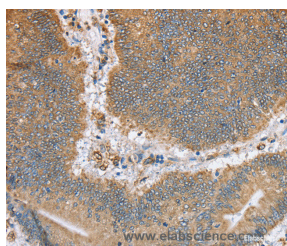
Catalog No.	E-AB-14819	Reactivity	H,M,R
Storage	Store at -20°C. Avoid freeze / thaw cycles.	Host	Rabbit
Applications	WB,IHC,ELISA	Isotype	IgG

Note: Centrifuge before opening to ensure complete recovery of vial contents.

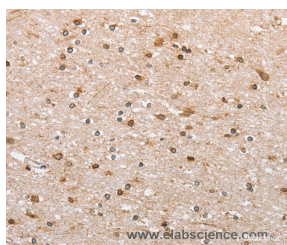
Images



Western Blot analysis of HeLa and 231 cell, Human placenta and carcinoma of sigmoid tissue using CANX Polyclonal Antibody at dilution of 1:615



Immunohistochemistry of paraffin-embedded Human colon cancer using CANX Polyclonal Antibody at dilution of 1:50



Immunohistochemistry of paraffin-embedded Human brain using CANX Polyclonal Antibody at dilution of 1:50

Immunogen Information

Immunogen	Recombinant protein of human CANX
Gene Accession	BC003552
Swissprot	P27824
Synonyms	CNX,P90,IP90

Product Information

Calculated MW	68kDa
Buffer	PBS with 0.05% sodium azide and 50% glycerol, PH7.4
Purify	Affinity purification
Dilution	WB 1:500-1:2000, IHC 1:50-1:200

Background

This gene encodes a member of the calnexin family of molecular chaperones. The encoded protein is a calcium-binding, endoplasmic reticulum (ER)-associated protein that interacts transiently with newly synthesized N-linked glycoproteins, facilitating protein folding and assembly. It may also play a central role in the quality control of protein folding by retaining incorrectly folded protein subunits within the ER for degradation. Alternatively spliced transcript variants encoding the same protein have been described.

For Research Use Only

Thank you for your recent purchase.
 If you would like to learn more about antibodies, please visit www.elabscience.com.

**Focus on your research
 Service for life science**

Applications:WB-Western Blot IHC-Immunohistochemistry IF-Immunofluorescence IP-Immunoprecipitation FC-Flow cytometry ChIP-Chromatin Immunoprecipitation Reactivity: H-Human R-Rat M-Mouse Mk-Monkey Dg-Dog Ch-Chicken Hm-Hamster Rb-Rabbit Sh-Sheep Pg-Pig Z-Zebrafish X-Xenopus C-Cow.