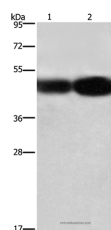


BSG Polyclonal Antibody

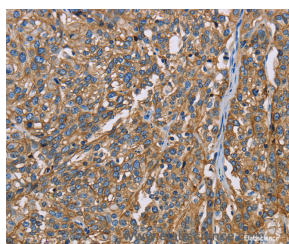
Catalog No.	E-AB-14835	Reactivity	H
Storage	Store at -20°C. Avoid freeze / thaw cycles.	Host	Rabbit
Applications	WB,IHC,ELISA	Isotype	IgG

Note: Centrifuge before opening to ensure complete recovery of vial contents.

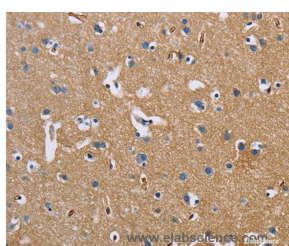
Images



Western Blot analysis of A549 and 231 cell using BSG Polyclonal Antibody at dilution of 1:430



Immunohistochemistry of paraffin-embedded Human esophagus cancer using BSG Polyclonal Antibody at dilution of 1:60



Immunohistochemistry of paraffin-embedded Human brain using BSG Polyclonal Antibody at dilution of 1:60

Immunogen Information

Immunogen	Recombinant protein of human BSG
Gene Accession	BC009040
Swissprot	P35613
Synonyms	M6,OK,5F7,TCSF,CD147,EMMPRIN

Product Information

Calculated MW	42kDa
Buffer	PBS with 0.05% sodium azide and 50% glycerol, PH7.4
Purify	Affinity purification
Dilution	WB 1:500-1:2000, IHC 1:50-1:200

Background

The protein encoded by this gene is a plasma membrane protein that is important in spermatogenesis, embryo implantation, neural network formation, and tumor progression. The encoded protein is also a member of the immunoglobulin superfamily. Multiple transcript variants encoding different isoforms have been found for this gene.

For Research Use Only

Thank you for your recent purchase.
 If you would like to learn more about antibodies, please visit www.elabscience.com.

**Focus on your research
 Service for life science**

Applications:WB-Western Blot IHC-Immunohistochemistry IF-Immunofluorescence IP-Immunoprecipitation FC-Flow cytometry ChIP-Chromatin Immunoprecipitation Reactivity: H-Human R-Rat M-Mouse Mk-Monkey Dg-Dog Ch-Chicken Hm-Hamster Rb-Rabbit Sh-Sheep Pg-Pig Z-Zebrafish X-Xenopus C-Cow.