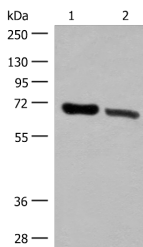


TRIM8 Polyclonal Antibody

Catalog No.	E-AB-17996	Reactivity	H,M
Storage	Store at -20°C. Avoid freeze / thaw cycles.	Host	Rabbit
Applications	WB,ELISA	Isotype	IgG

Note: Centrifuge before opening to ensure complete recovery of vial contents.

Images



Western blot analysis of Human placenta tissue and Human fetal brain tissue lysates using TRIM8 Polyclonal Antibody at dilution of 1:500

Immunogen Information

Immunogen	Synthetic peptide of human TRIM8
Gene Accession	NP112174
Swissprot	Q9BZR9
Synonyms	RING finger protein 27,RNF27,RP11-47A8.4,TRIM8,TRIM8,Tripartite motif containing 8

Product Information

Calculated MW	61 kDa
Observed MW	Refer to figures
Buffer	PBS with 0.05% NaN ₃ and 40% Glycerol,pH7.4
Purify	Antigen affinity purification
Dilution	WB 1:500-1:2000, ELISA 1:5000-1:10000

Background

This gene encodes a member of the tripartite motif (TRIM) protein family. Based on similarities to other proteins, the encoded protein is suspected to be an E3 ubiquitin-protein ligase. Regulation of this gene may be altered in some cancers. Mutations resulting in a truncated protein product have been observed in early-onset epileptic encephalopathy (EOEE).

For Research Use Only

Thank you for your recent purchase.

If you would like to learn more about antibodies, please visit www.elabscience.com.

**Focus on your research
Service for life science**

Applications:WB-Western Blot IHC-Immunohistochemistry IF-Immunofluorescence IP-Immunoprecipitation FC-Flow cytometry ChIP-Chromatin Immunoprecipitation Reactivity: H-Human R-Rat M-Mouse Mk-Monkey Dg-Dog Ch-Chicken Hm-Hamster Rb-Rabbit Sh-Sheep Pg-Pig Z-Zebrafish X-Xenopus C-Cow.