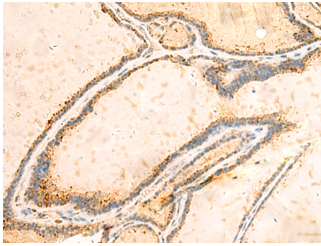


## IGFBPL1 Polyclonal Antibody

<b>Catalog No.</b>	E-AB-18105	<b>Reactivity</b>	H
<b>Storage</b>	Store at -20°C. Avoid freeze / thaw cycles.	<b>Host</b>	Rabbit
<b>Applications</b>	IHC,ELISA	<b>Isotype</b>	IgG

**Note:** Centrifuge before opening to ensure complete recovery of vial contents.

### Images



Immunohistochemistry of paraffin-embedded Human thyroid cancer tissue using IGFBPL1 Polyclonal Antibody at dilution of 1:55(×200)

### Immunogen Information

<b>Immunogen</b>	Synthetic peptide of human IGFBPL1
<b>Gene Accession</b>	NP001007564
<b>Swissprot</b>	Q8WX77
<b>Synonyms</b>	Insulin Like Growth Factor Binding Protein Like 1,Insulin-Like Growth Factor Binding Protein Related Protein 4,IGFBPRP4

### Product Information

<b>Buffer</b>	PBS with 0.05% NaN3 and 40% Glycerol,pH7.4
<b>Purify</b>	Antigen affinity purification
<b>Dilution</b>	IHC 1:50-1:300, ELISA 1:5000-1:10000

### Background

IGFBPL1 (Insulin Like Growth Factor Binding Protein Like 1) is a Protein Coding gene. Diseases associated with IGFBPL1 include Umbilical Hernia. Gene Ontology (GO) annotations related to this gene include insulin-like growth factor binding. An important paralog of this gene is IGFBP7.

#### For Research Use Only

Thank you for your recent purchase.

If you would like to learn more about antibodies, please visit [www.elabscience.com](http://www.elabscience.com).

**Focus on your research  
Service for life science**

Applications:WB-Western Blot IHC-Immunohistochemistry IF-Immunofluorescence IP-Immunoprecipitation FC-Flow cytometry ChIP-Chromatin Immunoprecipitation Reactivity: H-Human R-Rat M-Mouse Mk-Monkey Dg-Dog Ch-Chicken Hm-Hamster Rb-Rabbit Sh-Sheep Pg-Pig Z-Zebrafish X-Xenopus C-Cow.