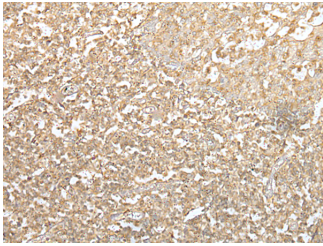


SPIC Polyclonal Antibody

Catalog No.	E-AB-18438	Reactivity	H
Storage	Store at -20°C. Avoid freeze / thaw cycles.	Host	Rabbit
Applications	IHC,ELISA	Isotype	IgG

Note: Centrifuge before opening to ensure complete recovery of vial contents.

Images



Immunohistochemistry of paraffin-embedded Human tonsil tissue using SPIC Polyclonal Antibody at dilution of 1:55(×200)

Immunogen Information

Immunogen	Full length fusion protein
Gene Accession	BC032317
Swissprot	Q8N5J4
Synonyms	AU019198,C76795,MGC40611,MGC80555,Prf,Spi C,Spi C transcription factor,SPIC

Product Information

Buffer	PBS with 0.05% NaN3 and 40% Glycerol,pH7.4
Purify	Antigen affinity purification
Dilution	IHC 1:40-1:250, ELISA 1:5000-1:10000

Background

The protein encoded by this gene regulates the development of red pulp macrophages, which are necessary for iron homeostasis and the recycling of red blood cells.

For Research Use Only

Thank you for your recent purchase.

If you would like to learn more about antibodies, please visit www.elabscience.com.

**Focus on your research
Service for life science**

Applications:WB-Western Blot IHC-Immunohistochemistry IF-Immunofluorescence IP-Immunoprecipitation FC-Flow cytometry ChIP-Chromatin Immunoprecipitation Reactivity: H-Human R-Rat M-Mouse Mk-Monkey Dg-Dog Ch-Chicken Hm-Hamster Rb-Rabbit Sh-Sheep Pg-Pig Z-Zebrafish X-Xenopus C-Cow.