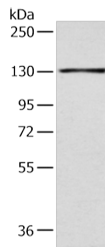


## SMARCA1 Polyclonal Antibody

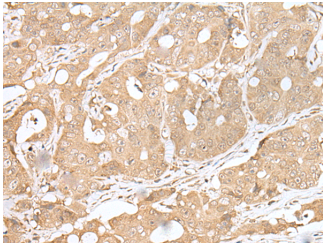
<b>Catalog No.</b>	E-AB-19442	<b>Reactivity</b>	H,M
<b>Storage</b>	Store at -20°C. Avoid freeze / thaw cycles.	<b>Host</b>	Rabbit
<b>Applications</b>	WB,IHC,ELISA	<b>Isotype</b>	IgG

**Note:** Centrifuge before opening to ensure complete recovery of vial contents.

### Images



Western blot analysis of 293T cell using SMARCA1 Polyclonal Antibody at dilution of 1:450



Immunohistochemistry of paraffin-embedded Human gastric cancer tissue using SMARCA1 Polyclonal Antibody at dilution of 1:30(x200)

### Immunogen Information

<b>Immunogen</b>	Synthetic peptide of human SMARCA1
<b>Gene Accession</b>	NP003060
<b>Swissprot</b>	P28370
<b>Synonyms</b>	ATP dependent helicase SMARCA1,SMARCA1,SNF2-like 1,SNF2L,SNF2L1,SNF2LB,SNF2LT,SWI2

### Product Information

<b>Calculated MW</b>	123 kDa
<b>Observed MW</b>	Refer to figures
<b>Buffer</b>	PBS with 0.05% NaN3 and 40% Glycerol,pH7.4
<b>Purify</b>	Antigen affinity purification
<b>Dilution</b>	WB 1:500-1:2000, IHC 1:25-1:100, ELISA 1:5000-1:10000

### Background

This gene encodes a member of the SWI/SNF family of proteins. The encoded protein is an ATPase which is expressed in diverse tissues and contributes to the chromatin remodeling complex that is involved in transcription. The protein may also play a role in DNA damage, growth inhibition and apoptosis of cancer cells. Alternative splicing results in multiple transcript variants.

#### For Research Use Only

Thank you for your recent purchase.  
 If you would like to learn more about antibodies, please visit [www.elabscience.com](http://www.elabscience.com).

#### Focus on your research Service for life science

Applications:WB-Western Blot IHC-Immunohistochemistry IF-Immunofluorescence IP-Immunoprecipitation FC-Flow cytometry ChIP-Chromatin Immunoprecipitation Reactivity: H-Human R-Rat M-Mouse Mk-Monkey Dg-Dog Ch-Chicken Hm-Hamster Rb-Rabbit Sh-Sheep Pg-Pig Z-Zebrafish X-Xenopus C-Cow.