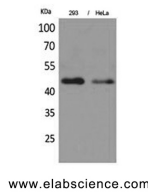


IDH1 Polyclonal Antibody

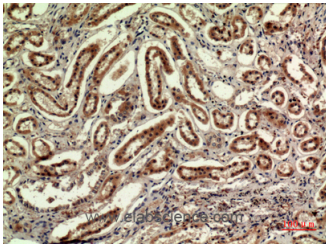
| | | | |
|---------------------|---|-------------------|--------|
| Catalog No. | E-AB-30163 | Reactivity | H,M,R |
| Storage | Store at -20°C. Avoid freeze / thaw cycles. | Host | Rabbit |
| Applications | WB,IHC-p,ELISA | Isotype | IgG |

Note: Centrifuge before opening to ensure complete recovery of vial contents.

Images



Western Blot analysis of 293T, Hela cells with IDH1 Polyclonal Antibody.



Immunohistochemistry of paraffin-embedded Human kidney tissue using IDH1 Polyclonal Antibody at dilution of 1:100.

Immunogen Information

| | |
|------------------|--|
| Immunogen | Synthesized peptide derived from the N-terminal region of human IDH1. |
| Swissprot | O75874 |
| Synonyms | IDH1,PICD,Isocitrate dehydrogenase [NADP] cytoplasmic,IDH,Cytosolic NADP-isocitrate dehydrogenase,IDP,NADP(+)-specific ICDH,Oxalosuccinate decarboxylase |

Product Information

| | |
|----------------------|---|
| Calculated MW | 47kDa |
| Observed MW | 46kDa |
| Buffer | PBS with 0.02% sodium azide, 0.5% BSA and 50% glycerol, pH7.4 |
| Purify | Affinity purification |
| Dilution | WB 1:500-1:2000, IHC 1:100-1:300, ELISA 1:10000-1:20000 |

Background

Isocitrate dehydrogenases catalyze the oxidative decarboxylation of isocitrate to 2-oxoglutarate. These enzymes belong to two distinct subclasses, one of which utilizes NAD(+) as the electron acceptor and the other NADP(+). Five isocitrate dehydrogenases have been reported: three NAD(+)-dependent isocitrate dehydrogenases, which localize to the mitochondrial matrix, and two NADP(+)-dependent isocitrate dehydrogenases, one of which is mitochondrial and the other predominantly cytosolic. Each NADP(+)-dependent isozyme is a homodimer. The protein encoded by this gene is the NADP(+)-dependent isocitrate dehydrogenase found in the cytoplasm and peroxisomes. It contains the PTS-1 peroxisomal targeting signal sequence.

For Research Use Only

Thank you for your recent purchase.
 If you would like to learn more about antibodies, please visit www.elabscience.com.

Focus on your research Service for life science

Applications:WB-Western Blot IHC-Immunohistochemistry IF-Immunofluorescence IP-Immunoprecipitation FC-Flow cytometry ChIP-Chromatin Immunoprecipitation Reactivity: H-Human R-Rat M-Mouse Mk-Monkey Dg-Dog Ch-Chicken Hm-Hamster Rb-Rabbit Sh-Sheep Pg-Pig Z-Zebrafish X-Xenopus C-Cow.