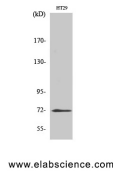


ABCG2 Polyclonal Antibody

Catalog No.	E-AB-30393	Reactivity	H
Storage	Store at -20°C. Avoid freeze / thaw cycles.	Host	Rabbit
Applications	WB,IHC-p,ELISA	Isotype	IgG

Note: Centrifuge before opening to ensure complete recovery of vial contents.

Images



Western Blot analysis of HT-29 cells with ABCG2 Polyclonal Antibody.

Immunogen Information

Immunogen	Synthesized peptide derived from the Internal region of human ABCG2.
Swissprot	Q9UNQ0
Synonyms	ABCG2,ABCP,BCRP,BCRP1,MXR,ATP-binding cassette sub-family G member 2,Breast cancer resistance protein,CDw338,Mitoxantrone resistance-associated protein,Placenta-specific ATP-binding cassette transporter,CD antigen CD338

Product Information

Calculated MW	72kDa
Observed MW	72kDa
Buffer	PBS with 0.02% sodium azide, 0.5% BSA and 50% glycerol, pH7.4
Purify	Affinity purification
Dilution	WB 1:500-1:2000, IHC 1:100-1:300, ELISA 1:10000

Background

Xenobiotic transporter that may play an important role in the exclusion of xenobiotics from the brain. May be involved in brain-to-blood efflux. Appears to play a major role in the multidrug resistance phenotype of several cancer cell lines. When overexpressed, the transfected cells become resistant to mitoxantrone, daunorubicin and doxorubicin, display diminished intracellular accumulation of daunorubicin, and manifest an ATP-dependent increase in the efflux of rhodamine 123.

For Research Use Only

Thank you for your recent purchase.

If you would like to learn more about antibodies, please visit www.elabscience.com.

**Focus on your research
Service for life science**

Applications:WB-Western Blot IHC-Immunohistochemistry IF-Immunofluorescence IP-Immunoprecipitation FC-Flow cytometry ChIP-Chromatin Immunoprecipitation Reactivity: H-Human R-Rat M-Mouse Mk-Monkey Dg-Dog Ch-Chicken Hm-Hamster Rb-Rabbit Sh-Sheep Pg-Pig Z-Zebrafish X-Xenopus C-Cow.