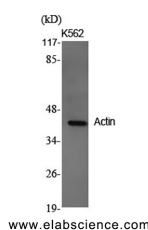


Actin Polyclonal Antibody

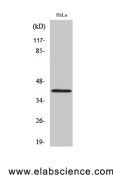
Catalog No.	E-AB-30419	Reactivity	H,M,R
Storage	Store at -20°C. Avoid freeze / thaw cycles.	Host	Rabbit
Applications	WB,IHC-p,ELISA	Isotype	IgG

Note: Centrifuge before opening to ensure complete recovery of vial contents.

Images



Western Blot analysis of K562 cells using Actin Polyclonal Antibody at dilution of 1:2000.



Western Blot analysis of HeLa cells using Actin Polyclonal Antibody at dilution of 1:2000.

Immunogen Information

Immunogen	Synthesized peptide derived from the C-terminal region of human Actin
Swissprot	P60709,Q9BYX7,P63261
Synonyms	ACTB,Actin,cytoplasmic 1,Beta-actin,POTEKP,ACTBL3,FKSG30,Putative beta-actin-like protein 3,Kappa-actin,POTE ankyrin domain family member K,ACTG1,ACTB,ACTG,Actin,cytoplasmic 2,Gamma-actin

Product Information

Calculated MW	42kDa
Observed MW	45kDa
Buffer	PBS with 0.02% sodium azide, 0.5% protective protein and 50% glycerol, pH7.4
Purify	Affinity purification
Dilution	WB 1:500-1:2000, IHC 1:100-1:300, ELISA 1:10000

Background

Actins are highly conserved proteins that are involved in various types of cell motility and are ubiquitously expressed in all eukaryotic cells.

For Research Use Only

Thank you for your recent purchase.

If you would like to learn more about antibodies, please visit www.elabscience.com.

**Focus on your research
 Service for life science**

Applications:WB-Western Blot IHC-Immunohistochemistry IF-Immunofluorescence IP-Immunoprecipitation FC-Flow cytometry ChIP-Chromatin Immunoprecipitation Reactivity: H-Human R-Rat M-Mouse Mk-Monkey Dg-Dog Ch-Chicken Hm-Hamster Rb-Rabbit Sh-Sheep Pg-Pig Z-Zebrafish X-Xenopus C-Cow.