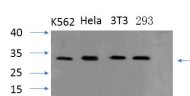


PYCARD Polyclonal Antibody

Catalog No.	E-AB-30582	Reactivity	H,M,R
Storage	Store at -20°C. Avoid freeze / thaw cycles.	Host	Rabbit
Applications	WB,IHC-p,IF,ELISA	Isotype	IgG

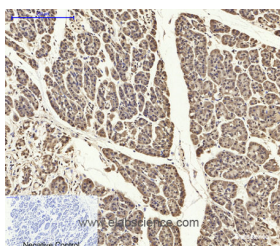
Note: Centrifuge before opening to ensure complete recovery of vial contents.

Images



www.elabscience.com

Western Blot analysis of various cells using PYCARD Polyclonal Antibody at dilution of 1:1000.



Immunohistochemistry of paraffin-embedded Human stomach cancer tissue using PYCARD Polyclonal Antibody at dilution of 1:200.

Immunogen Information

Immunogen	Synthesized peptide derived from the N-terminal region of human ASC
Swissprot	Q9ULZ3
Synonyms	PYCARD,ASC,CARD5,TMS1,Apoptosis-associated speck-like protein containing a CARD,hASC,Caspase recruitment domain-containing protein 5,PYD and CARD domain-containing protein,Target of methylation-induced silencing 1

Product Information

Calculated MW	22kDa
Observed MW	21kDa
Buffer	PBS with 0.02% sodium azide, 0.5% protective protein and 50% glycerol, pH7.4
Purify	Affinity purification
Dilution	WB 1:500-1:2000, IHC 1:100-1:300, IF 1:200-1:1000, ELISA 1:40000

Background

Promotes caspase-mediated apoptosis. This proapoptotic activity is mediated predominantly through the activation of caspase-9. May be a component of the inflammasome, a protein complex which also includes NALP2, CARD8 and CASP1 and whose function would be the activation of proinflammatory caspases.

For Research Use Only

Thank you for your recent purchase.
 If you would like to learn more about antibodies, please visit www.elabscience.com.

**Focus on your research
 Service for life science**

Applications:WB-Western Blot IHC-Immunohistochemistry IF-Immunofluorescence IP-Immunoprecipitation FC-Flow cytometry ChIP-Chromatin Immunoprecipitation Reactivity: H-Human R-Rat M-Mouse Mk-Monkey Dg-Dog Ch-Chicken Hm-Hamster Rb-Rabbit Sh-Sheep Pg-Pig Z-Zebrafish X-Xenopus C-Cow.