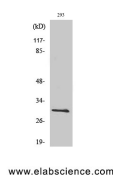


BCL-x Polyclonal Antibody

Catalog No.	E-AB-30640	Reactivity	H,M,R
Storage	Store at -20°C. Avoid freeze / thaw cycles.	Host	Rabbit
Applications	WB,IHC-p,IF,ELISA	Isotype	IgG

Note: Centrifuge before opening to ensure complete recovery of vial contents.

Images



Western Blot analysis of 293T cells using Bcl-x Polyclonal Antibody at dilution of 1:500.

Immunogen Information

Immunogen	Synthesized peptide derived from human Bcl-x around the non-phosphorylation site of Thr47.
Swissprot	Q07817
Synonyms	BCL2L1,BCL2L,BCLX,Bcl-2-like protein 1,Bcl2-L-1,Apoptosis regulator Bcl-X

Product Information

Calculated MW	26kDa
Observed MW	30kDa
Buffer	PBS with 0.02% sodium azide, 0.5% protective protein and 50% glycerol, pH7.4
Purify	Affinity purification
Dilution	WB 1:500-1:2000, IHC 1:100-1:300, IF 1:200-1:1000, ELISA 1:5000

Background

Bcl x is a member of the Bcl 2 family of proteins, which function as regulators of apoptosis. It may provide neuroprotection against ischemic brain injury. Bcl x has two isoforms, Bcl xl (long) a 241 amino acid protein and Bcl xs (short) a 178 amino acid protein lacking a 63 amino acid domain that is well conserved among members of the Bcl2 family. Isoform Bcl-X(L) anti-apoptotic activity is inhibited by association with SIVA isoform 1. Inhibits activation of caspases. Appears to regulate cell death by blocking the voltage-dependent anion channel (VDAC) by binding to it and preventing the release of the caspase activator, cytochrome c, from the mitochondrial membrane. The Bcl-X(S) isoform promotes apoptosis.

For Research Use Only

Thank you for your recent purchase.
 If you would like to learn more about antibodies, please visit www.elabscience.com.

**Focus on your research
 Service for life science**

Applications:WB-Western Blot IHC-Immunohistochemistry IF-Immunofluorescence IP-Immunoprecipitation FC-Flow cytometry ChIP-Chromatin Immunoprecipitation Reactivity: H-Human R-Rat M-Mouse Mk-Monkey Dg-Dog Ch-Chicken Hm-Hamster Rb-Rabbit Sh-Sheep Pg-Pig Z-Zebrafish X-Xenopus C-Cow.