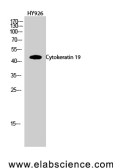


CK-19 Polyclonal Antibody

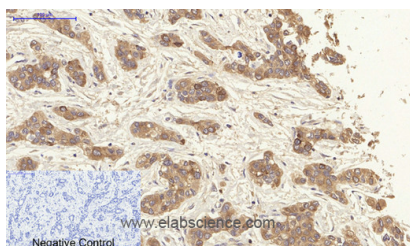
Catalog No.	E-AB-31146	Reactivity	H,M,R
Storage	Store at -20°C. Avoid freeze / thaw cycles.	Host	Rabbit
Applications	WB,IHC-p,IF,ELISA	Isotype	IgG

Note: Centrifuge before opening to ensure complete recovery of vial contents.

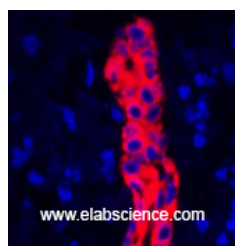
Images



Western Blot analysis of HY926 cells using CK-19 Polyclonal Antibody at dilution of 1:1000.



Immunohistochemistry of paraffin-embedded Human liver cancer tissue using CK-19 Polyclonal Antibody at dilution of 1:200.



Immunofluorescence analysis of Human liver tissue using CK-19 Polyclonal Antibody at dilution of 1:200.

Immunogen Information

Immunogen	Synthesized peptide derived from the Internal region of human Cytokeratin 19
Swissprot	P08727
Synonyms	KRT19,Keratin,type I cytoskeletal 19,Cytokeratin-19,CK-19,Keratin-19,K19

Product Information

Calculated MW	44-59kDa
Observed MW	44kDa
Buffer	PBS with 0.02% sodium azide, 0.5% protective protein and 50% glycerol, pH7.4
Purify	Affinity purification
Dilution	WB 1:500-1:2000, IHC 1:100-1:300, IF 1:200-1:1000, ELISA 1:10000

Background

Involved in the organization of myofibers. Together with KRT8, helps to link the contractile apparatus to dystrophin at the costameres of striated muscle.

For Research Use Only

Thank you for your recent purchase.
 If you would like to learn more about antibodies, please visit www.elabscience.com.

**Focus on your research
 Service for life science**

Applications:WB-Western Blot IHC-Immunohistochemistry IF-Immunofluorescence IP-Immunoprecipitation FC-Flow cytometry ChIP-Chromatin Immunoprecipitation Reactivity: H-Human R-Rat M-Mouse Mk-Monkey Dg-Dog Ch-Chicken Hm-Hamster Rb-Rabbit Sh-Sheep Pg-Pig Z-Zebrafish X-Xenopus C-Cow.