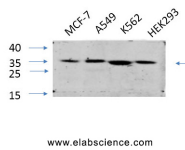


## EIF2 alpha Polyclonal Antibody

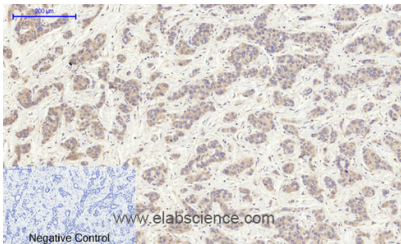
<b>Catalog No.</b>	E-AB-31295	<b>Reactivity</b>	H,M,R,Mk
<b>Storage</b>	Store at -20°C. Avoid freeze / thaw cycles.	<b>Host</b>	Rabbit
<b>Applications</b>	WB,IHC-p,IF,ELISA	<b>Isotype</b>	IgG

**Note:** Centrifuge before opening to ensure complete recovery of vial contents.

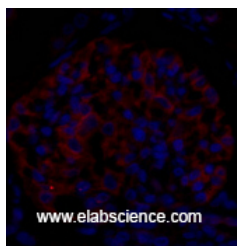
### Images



Western Blot analysis of various cells using EIF2 alpha Polyclonal Antibody at dilution of 1:1000.



Immunohistochemistry of paraffin-embedded Human liver cancer tissue using EIF2 alpha Polyclonal Antibody at dilution of 1:200.



Immunofluorescence analysis of Rat kidney tissue using EIF2 alpha Polyclonal Antibody at dilution of 1:200.

### Immunogen Information

<b>Immunogen</b>	Synthesized peptide derived from human eIF2 $\alpha$ around the non-phosphorylation site of Ser51.
<b>Swissprot</b>	P05198
<b>Synonyms</b>	EIF2S1,EIF2A,Eukaryotic translation initiation factor 2 subunit 1,Eukaryotic translation initiation factor 2 subunit alpha,eIF-2-alpha,eIF-2A,eIF-2alpha

### Product Information

<b>Calculated MW</b>	36kDa
<b>Observed MW</b>	38kDa
<b>Buffer</b>	PBS with 0.02% sodium azide, 0.5% BSA and 50% glycerol, pH7.4
<b>Purify</b>	Affinity purification
<b>Dilution</b>	WB 1:500-1:2000, IHC 1:100-1:300, IF 1:50-1:200, ELISA 1:10000

### Background

Functions in the early steps of protein synthesis of a small number of specific mRNAs. Acts by directing the binding of methionyl-tRNA<sub>i</sub> to 40S ribosomal subunits. In contrast to the eIF-2 complex, it binds methionyl-tRNA<sub>i</sub> to 40 S subunits in a codon-dependent manner, whereas the eIF-2 complex binds methionyl-tRNA<sub>i</sub> to 40 S subunits in a GTP-dependent manner. May act by impinging the expression of specific proteins.

### For Research Use Only

Thank you for your recent purchase.  
 If you would like to learn more about antibodies, please visit [www.elabscience.com](http://www.elabscience.com).

### Focus on your research Service for life science

Applications:WB-Western Blot IHC-Immunohistochemistry IF-Immunofluorescence IP-Immunoprecipitation FC-Flow cytometry ChIP-Chromatin Immunoprecipitation Reactivity: H-Human R-Rat M-Mouse Mk-Monkey Dg-Dog Ch-Chicken Hm-Hamster Rb-Rabbit Sh-Sheep Pg-Pig Z-Zebrafish X-Xenopus C-Cow.