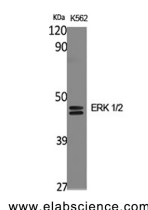


ERK 1/2 Polyclonal Antibody

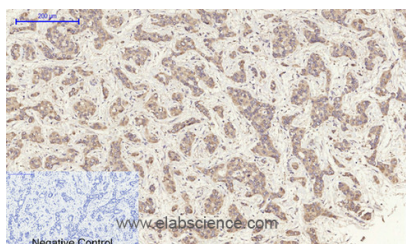
| | | | |
|---------------------|---|-------------------|--------|
| Catalog No. | E-AB-31374 | Reactivity | H,M,R |
| Storage | Store at -20°C. Avoid freeze / thaw cycles. | Host | Rabbit |
| Applications | WB,IHC-p,IF,ELISA | Isotype | IgG |

Note: Centrifuge before opening to ensure complete recovery of vial contents.

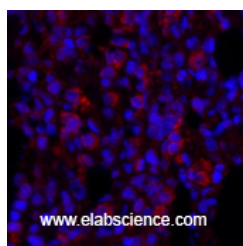
Images



Western Blot analysis of K562 cells using ERK 1/2 Polyclonal Antibody at dilution of 1:2000.



Immunohistochemistry of paraffin-embedded Human liver cancer tissue using ERK 1/2 Polyclonal Antibody at dilution of 1:200.



Immunofluorescence analysis of Rat lung tissue using ERK 1/2 Polyclonal Antibody at dilution of 1:200.

Immunogen Information

| | |
|------------------|---|
| Immunogen | Synthesized peptide derived from the C-terminal region of human ERK 1/2 |
| Swissprot | P27361,P28482 |
| Synonyms | MAPK3,ERK1,PRKM3,Mitogen-activated protein kinase 3,MAP kinase 3,MAPK 3,ERT2,Extracellular signal-regulated kinase 1,ERK-1,Insulin-stimulated MAP2 kinase,MAP kinase isoform p44,p44-MAPK,Microtubule-associated protein 2 kinase,p |

Product Information

| | |
|----------------------|--|
| Calculated MW | 43kDa |
| Observed MW | 42,44kDa |
| Buffer | PBS with 0.02% sodium azide, 0.5% BSA and 50% glycerol, pH7.4 |
| Purify | Affinity purification |
| Dilution | WB 1:500-1:2000, IHC 1:100-1:300, IF 1:50-1:200, ELISA 1:10000 |

Background

Involved in both the initiation and regulation of meiosis, mitosis, and postmitotic functions in differentiated cells by phosphorylating a number of transcription factors such as ELK1. Phosphorylates EIF4EBP1; required for initiation of translation. Phosphorylates microtubule-associated protein 2 (MAP2). Phosphorylates SPZ1 (By similarity). Phosphorylates heat shock factor protein 4 (HSF4) and ARHGEF2. Acts as a transcriptional repressor. Binds to a [GC]AAA[GC] consensus sequence. Repress the expression of interferon gamma-induced genes. Seems to bind to the promoter of CCL5, DMP1, IFIH1, IFITM1, IRF7, IRF9, LAMP3, OAS1, OAS2, OAS3 and STAT1. Transcriptional activity is independent of kinase activity.

For Research Use Only

Thank you for your recent purchase.
 If you would like to learn more about antibodies, please visit www.elabscience.com.

Focus on your research Service for life science

Applications:WB-Western Blot IHC-Immunohistochemistry IF-Immunofluorescence IP-Immunoprecipitation FC-Flow cytometry ChIP-Chromatin Immunoprecipitation Reactivity: H-Human R-Rat M-Mouse Mk-Monkey Dg-Dog Ch-Chicken Hm-Hamster Rb-Rabbit Sh-Sheep Pg-Pig Z-Zebrafish X-Xenopus C-Cow.