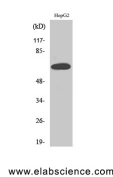


## ER alpha Polyclonal Antibody

<b>Catalog No.</b>	E-AB-31378	<b>Reactivity</b>	H
<b>Storage</b>	Store at -20°C. Avoid freeze / thaw cycles.	<b>Host</b>	Rabbit
<b>Applications</b>	WB,IHC-p,ELISA	<b>Isotype</b>	IgG

**Note:** Centrifuge before opening to ensure complete recovery of vial contents.

### Images



Western Blot analysis of HepG2 cells using ER alpha Polyclonal Antibody at dilution of 1:500.

### Immunogen Information

<b>Immunogen</b>	Synthesized peptide derived from human ER $\alpha$ around the non-phosphorylation site of Ser167.
<b>Swissprot</b>	P03372
<b>Synonyms</b>	ESR1,ESR,NR3A1,Estrogen receptor,ER,ER-alpha,Estradiol receptor,Nuclear receptor subfamily 3 group A member 1

### Product Information

<b>Calculated MW</b>	66kDa
<b>Observed MW</b>	66kDa
<b>Buffer</b>	PBS with 0.02% sodium azide, 0.5% protective protein and 50% glycerol, pH7.4
<b>Purify</b>	Affinity purification
<b>Dilution</b>	WB 1:500-1:2000, IHC 1:100-1:300, ELISA 1:20000

### Background

Nuclear hormone receptor. The steroid hormones and their receptors are involved in the regulation of eukaryotic gene expression and affect cellular proliferation and differentiation in target tissues. Can activate the transcriptional activity of TFF1.

#### For Research Use Only

Thank you for your recent purchase.

If you would like to learn more about antibodies, please visit [www.elabscience.com](http://www.elabscience.com).

**Focus on your research  
 Service for life science**

Applications:WB-Western Blot IHC-Immunohistochemistry IF-Immunofluorescence IP-Immunoprecipitation FC-Flow cytometry ChIP-Chromatin Immunoprecipitation Reactivity: H-Human R-Rat M-Mouse Mk-Monkey Dg-Dog Ch-Chicken Hm-Hamster Rb-Rabbit Sh-Sheep Pg-Pig Z-Zebrafish X-Xenopus C-Cow.