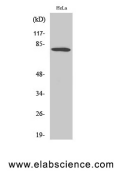


FOXO1 Polyclonal Antibody

Catalog No.	E-AB-31466	Reactivity	H,M,R
Storage	Store at -20°C. Avoid freeze / thaw cycles.	Host	Rabbit
Applications	WB,IHC-p,IF,ELISA	Isotype	IgG

Note: Centrifuge before opening to ensure complete recovery of vial contents.

Images



Western Blot analysis of HeLa cells using FoxO1 Polyclonal Antibody at dilution of 1:500.

Immunogen Information

Immunogen	Synthesized peptide derived from human FoxO1 around the non-phosphorylation site of Ser319.
Swissprot	Q12778
Synonyms	FOXO1,FKHR,FOXO1A,Forkhead box protein O1,Forkhead box protein O1A,Forkhead in rhabdomyosarcoma

Product Information

Calculated MW	70kDa
Observed MW	78kDa
Buffer	PBS with 0.02% sodium azide, 0.5% BSA and 50% glycerol, pH7.4
Purify	Affinity purification
Dilution	WB 1:500-1:2000, IHC 1:100-1:300, IF 1:200-1:1000, ELISA 1:20000

Background

Transcription factor which acts as a regulator of cell responses to oxidative stress. In the presence of KIRT1, mediates down-regulation of cyclin D1 and up-regulation of CDKN1B levels which are required for cell transition from proliferative growth to quiescence.

For Research Use Only

Thank you for your recent purchase.

If you would like to learn more about antibodies, please visit www.elabscience.com.

**Focus on your research
Service for life science**

Applications:WB-Western Blot IHC-Immunohistochemistry IF-Immunofluorescence IP-Immunoprecipitation FC-Flow cytometry ChIP-Chromatin Immunoprecipitation Reactivity: H-Human R-Rat M-Mouse Mk-Monkey Dg-Dog Ch-Chicken Hm-Hamster Rb-Rabbit Sh-Sheep Pg-Pig Z-Zebrafish X-Xenopus C-Cow.