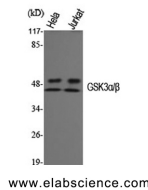


## GSK3 alpha/beta Polyclonal Antibody

<b>Catalog No.</b>	E-AB-31628	<b>Reactivity</b>	H,M,R
<b>Storage</b>	Store at -20°C. Avoid freeze / thaw cycles.	<b>Host</b>	Rabbit
<b>Applications</b>	WB,IHC-p,ELISA	<b>Isotype</b>	IgG

**Note:** Centrifuge before opening to ensure complete recovery of vial contents.

### Images



Western Blot analysis of HeLa, Jurkat cells using GSK3 alpha/beta Polyclonal Antibody at dilution of 1:1000.

### Immunogen Information

<b>Immunogen</b>	Synthesized peptide derived from human GSK3 $\alpha/\beta$ around the non-phosphorylation site of Tyr279/216.
<b>Swissprot</b>	P49840,P49841
<b>Synonyms</b>	GSK3A,Glycogen synthase kinase-3 alpha,GSK-3 alpha,Serine/threonine-protein kinase GSK3A,GSK3B,Glycogen synthase kinase-3 beta,GSK-3 beta,Serine/threonine-protein kinase GSK3B

### Product Information

<b>Calculated MW</b>	51kDa
<b>Observed MW</b>	51,46kDa
<b>Buffer</b>	PBS with 0.02% sodium azide, 0.5% BSA and 50% glycerol, pH7.4
<b>Purify</b>	Affinity purification
<b>Dilution</b>	WB 1:500-1:2000, IHC 1:100-1:300, ELISA 1:20000

### Background

Glycogen synthase kinase-3 (GSK-3) was initially identified as an enzyme that regulates glycogen synthesis in response to insulin. GSK-3 is a ubiquitously expressed serine/threonine protein kinase that phosphorylates and inactivates glycogen synthase. GSK-3 is a critical downstream element of the PI3 kinase/Akt cell survival pathway whose activity can be inhibited by Akt-mediated phosphorylation at Ser21 of GSK-3 $\alpha$  and Ser9 of GSK-3 $\beta$ . GSK-3 has been implicated in the regulation of cell fate in Dictyostelium and is a component of the Wnt signaling pathway required for Drosophila, Xenopus and mammalian development. GSK-3 has been shown to regulate cyclin D1 proteolysis and subcellular localization.

#### For Research Use Only

Thank you for your recent purchase.  
 If you would like to learn more about antibodies, please visit [www.elabscience.com](http://www.elabscience.com).

**Focus on your research  
 Service for life science**

Applications:WB-Western Blot IHC-Immunohistochemistry IF-Immunofluorescence IP-Immunoprecipitation FC-Flow cytometry ChIP-Chromatin Immunoprecipitation Reactivity: H-Human R-Rat M-Mouse Mk-Monkey Dg-Dog Ch-Chicken Hm-Hamster Rb-Rabbit Sh-Sheep Pg-Pig Z-Zebrafish X-Xenopus C-Cow.