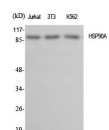


HSP90 alpha Polyclonal Antibody

Catalog No.	E-AB-31752	Reactivity	H,M,R
Storage	Store at -20°C. Avoid freeze / thaw cycles.	Host	Rabbit
Applications	WB,IHC-p,IF,ELISA	Isotype	IgG

Note: Centrifuge before opening to ensure complete recovery of vial contents.

Images



www.elabscience.com

Western Blot analysis of various cells using HSP90 alpha Polyclonal Antibody at dilution of 1:2000.

Immunogen Information

Immunogen	Synthesized peptide derived from the C-terminal region of human HSP90A
Swissprot	P07900
Synonyms	HSP90AA1,HSP90A,HSPC1,HSPCA,Heat shock protein HSP 90-alpha,Heat shock 86 kDa,HSP 86,HSP86,Renal carcinoma antigen NY-REN-38

Product Information

Calculated MW	85kDa
Observed MW	85kDa
Buffer	PBS with 0.02% sodium azide, 0.5% protective protein and 50% glycerol, pH7.4
Purify	Affinity purification
Dilution	WB 1:500-1:2000, IHC 1:100-1:300, IF 1:200-1:1000, ELISA 1:40000

Background

Molecular chaperone. Has ATPase activity.

For Research Use Only

Thank you for your recent purchase.

If you would like to learn more about antibodies, please visit www.elabscience.com.

**Focus on your research
 Service for life science**

Applications:WB-Western Blot IHC-Immunohistochemistry IF-Immunofluorescence IP-Immunoprecipitation FC-Flow cytometry ChIP-Chromatin Immunoprecipitation Reactivity: H-Human R-Rat M-Mouse Mk-Monkey Dg-Dog Ch-Chicken Hm-Hamster Rb-Rabbit Sh-Sheep Pg-Pig Z-Zebrafish X-Xenopus C-Cow.