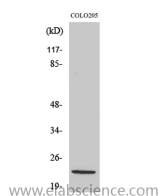


NDUFB10 Polyclonal Antibody

Catalog No.	E-AB-32179	Reactivity	H
Storage	Store at -20°C. Avoid freeze / thaw cycles.	Host	Rabbit
Applications	WB,IHC-p,ELISA	Isotype	IgG

Note: Centrifuge before opening to ensure complete recovery of vial contents.

Images



Western Blot analysis of COLO205 cells with NDUFB10 Polyclonal Antibody.

Immunogen Information

Immunogen	Synthesized peptide derived from the Internal region of human NDUFB10
Swissprot	O96000
Synonyms	NDUFB10,NADH dehydrogenase [ubiquinone] 1 beta subcomplex subunit 10,Complex I-PDSW,CI-PDSW,NADH-ubiquinone oxidoreductase PDSW subunit

Product Information

Calculated MW	21kDa
Observed MW	24kDa
Buffer	PBS with 0.02% sodium azide,0.5% BSA and 50% glycerol pH 7.4.
Purify	Affinity purification
Dilution	WB 1:500-1:2000, IHC 1:100-1:300, ELISA 1:40000

Background

NADH dehydrogenase [ubiquinone] 1 beta subcomplex subunit 10 is an enzyme that in humans is encoded by the NDUFB10 gene. NADH dehydrogenase (ubiquinone) 1 beta subcomplex subunit 10 is an accessory subunit of the NADH dehydrogenase (ubiquinone) complex, located in the mitochondrial inner membrane. It is also known as Complex I and is the largest of the five complexes of the electron transport chain.

For Research Use Only

Thank you for your recent purchase.

If you would like to learn more about antibodies, please visit www.elabscience.com.

**Focus on your research
 Service for life science**

Applications:WB-Western Blot IHC-Immunohistochemistry IF-Immunofluorescence IP-Immunoprecipitation FC-Flow cytometry ChIP-Chromatin Immunoprecipitation Reactivity: H-Human R-Rat M-Mouse Mk-Monkey Dg-Dog Ch-Chicken Hm-Hamster Rb-Rabbit Sh-Sheep Pg-Pig Z-Zebrafish X-Xenopus C-Cow.