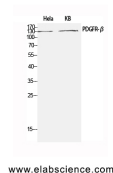


PDGFRB Polyclonal Antibody

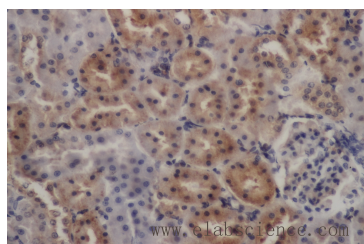
Catalog No.	E-AB-32531	Reactivity	H,M,R
Storage	Store at -20°C. Avoid freeze / thaw cycles.	Host	Rabbit
Applications	WB,IHC-p,IF,ELISA	Isotype	IgG

Note: Centrifuge before opening to ensure complete recovery of vial contents.

Images



Western Blot analysis of HeLa, KB cells using PDGFRB Polyclonal Antibody at dilution of 1:1000.



Immunohistochemistry of paraffin-embedded Rat kidney using PDGFRB Polyclonal Antibody at dilution of 1:50

Immunogen Information

Immunogen	Synthesized peptide derived from human PDGFR- β around the non-phosphorylation site of Tyr751.
Swissprot	P09619
Synonyms	PDGFRB,PDGFR,PDGFR1,Platelet-derived growth factor receptor beta,PDGF-R-beta,PDGFR-beta,Beta platelet-derived growth factor receptor,Beta-type platelet-derived growth factor receptor,CD140 antigen-like family member B,Platelet-deri

Product Information

Calculated MW	124kDa
Observed MW	124kDa
Buffer	PBS with 0.02% sodium azide, 0.5% protective protein and 50% glycerol, pH7.4
Purify	Affinity purification
Dilution	WB 1:500-1:2000, IHC 1:100-1:300, IF 1:200-1:1000, ELISA 1:40000

Background

This gene encodes a cell surface tyrosine kinase receptor for members of the platelet-derived growth factor family. These growth factors are mitogens for cells of mesenchymal origin. The identity of the growth factor bound to a receptor monomer determines whether the functional receptor is a homodimer or a heterodimer, composed of both platelet-derived growth factor receptor alpha and beta polypeptides. This gene is flanked on chromosome 5 by the genes for granulocyte-macrophage colony-stimulating factor and macrophage-colony stimulating factor receptor; all three genes may be implicated in the 5-q syndrome. A translocation between chromosomes 5 and 12, that fuses this gene to that of the translocation, ETV6, leukemia gene, results in chronic myeloproliferative disorder with eosinophilia.

For Research Use Only

Thank you for your recent purchase.
 If you would like to learn more about antibodies, please visit www.elabscience.com.

**Focus on your research
 Service for life science**

Applications:WB-Western Blot IHC-Immunohistochemistry IF-Immunofluorescence IP-Immunoprecipitation FC-Flow cytometry ChIP-Chromatin Immunoprecipitation Reactivity: H-Human R-Rat M-Mouse Mk-Monkey Dg-Dog Ch-Chicken Hm-Hamster Rb-Rabbit Sh-Sheep Pg-Pig Z-Zebrafish X-Xenopus C-Cow.