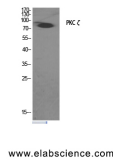


## PKC zeta Polyclonal Antibody

<b>Catalog No.</b>	E-AB-32609	<b>Reactivity</b>	H,M,R,Mk
<b>Storage</b>	Store at -20°C. Avoid freeze / thaw cycles.	<b>Host</b>	Rabbit
<b>Applications</b>	WB,IHC-p,IF,ELISA	<b>Isotype</b>	IgG

**Note:** Centrifuge before opening to ensure complete recovery of vial contents.

### Images



Western Blot analysis of COS7 cells treated with PMA (125ng/ml, 30mins) minus immunising peptide using PKC zeta Polyclonal Antibody at dilution of 1:2000.

### Immunogen Information

<b>Immunogen</b>	Synthesized peptide derived from human PKC $\zeta$ around the non-phosphorylation site of Thr560.
<b>Swissprot</b>	Q05513
<b>Synonyms</b>	PRKCZ,PKC2,Protein kinase C zeta type,nPKC-zeta

### Product Information

<b>Calculated MW</b>	68kDa
<b>Observed MW</b>	80kDa
<b>Buffer</b>	PBS with 0.02% sodium azide, 0.5% BSA and 50% glycerol, pH7.4
<b>Purify</b>	Affinity purification
<b>Dilution</b>	WB 1:500-1:2000, IHC 1:100-1:300, IF 1:200-1:1000, ELISA 1:5000

### Background

This is a calcium-independent, phospholipid-dependent, serine- and threonine-specific enzyme. Phosphorylates 'Ser-311' of RELA subunit of NF-kappa-B. PKC is activated by diacylglycerol which in turn phosphorylates a range of cellular proteins. PKC also serves as the receptor for phorbol esters, a class of tumor promoters. Subunit of a quaternary complex that plays a central role in epithelial cell polarization.

#### For Research Use Only

Thank you for your recent purchase.  
If you would like to learn more about antibodies, please visit [www.elabscience.com](http://www.elabscience.com).

**Focus on your research  
Service for life science**

Applications:WB-Western Blot IHC-Immunohistochemistry IF-Immunofluorescence IP-Immunoprecipitation FC-Flow cytometry ChIP-Chromatin Immunoprecipitation Reactivity: H-Human R-Rat M-Mouse Mk-Monkey Dg-Dog Ch-Chicken Hm-Hamster Rb-Rabbit Sh-Sheep Pg-Pig Z-Zebrafish X-Xenopus C-Cow.