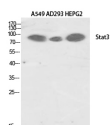


STAT3 Polyclonal Antibody

Catalog No.	E-AB-32981	Reactivity	H,M,R
Storage	Store at -20°C. Avoid freeze / thaw cycles.	Host	Rabbit
Applications	WB,IHC-p,IF,ELISA	Isotype	IgG

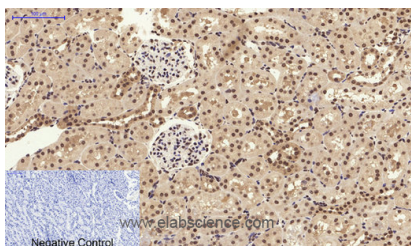
Note: Centrifuge before opening to ensure complete recovery of vial contents.

Images

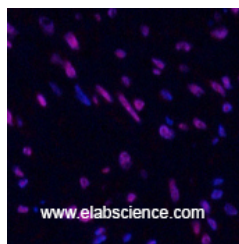


www.elabscience.com

Western Blot analysis of 1) A549, 2) AD293T, 3)HepG2 cells using Stat3 Polyclonal Antibody at dilution of 1:2000.



Immunohistochemistry of paraffin-embedded Rat kidney tissue using Stat3 Polyclonal Antibody at dilution of 1:200.



Immunofluorescence analysis of Human uterus tissue using Stat3 Polyclonal Antibody at dilution of 1:200.

Immunogen Information

Immunogen	Synthesized peptide derived from human Stat3 around the non-phosphorylation site of Tyr705.
Swissprot	P40763
Synonyms	STAT3,APRF,Signal transducer and activator of transcription 3,Acute-phase response factor

Product Information

Calculated MW	88kDa
Observed MW	88kDa
Buffer	PBS with 0.02% sodium azide, 0.5% BSA and 50% glycerol, pH7.4
Purify	Affinity purification
Dilution	WB 1:500-1:2000, IHC 1:100-1:300, IF 1:50-1:200, ELISA 1:5000

Background

Transcription factor that binds to the interleukin-6 (IL-6)-responsive elements identified in the promoters of various acute-phase protein genes. Activated by IL31 through IL31RA.

For Research Use Only

Thank you for your recent purchase.
 If you would like to learn more about antibodies, please visit www.elabscience.com.

**Focus on your research
 Service for life science**

Applications:WB-Western Blot IHC-Immunohistochemistry IF-Immunofluorescence IP-Immunoprecipitation FC-Flow cytometry ChIP-Chromatin Immunoprecipitation Reactivity: H-Human R-Rat M-Mouse Mk-Monkey Dg-Dog Ch-Chicken Hm-Hamster Rb-Rabbit Sh-Sheep Pg-Pig Z-Zebrafish X-Xenopus C-Cow.