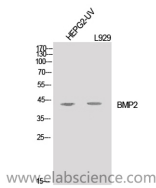


## BMP2 Polyclonal Antibody

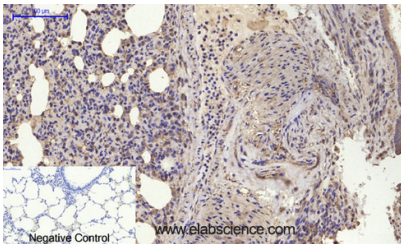
<b>Catalog No.</b>	E-AB-33728	<b>Reactivity</b>	H,M,R
<b>Storage</b>	Store at -20°C. Avoid freeze / thaw cycles.	<b>Host</b>	Rabbit
<b>Applications</b>	WB,IHC-p,ELISA	<b>Isotype</b>	IgG

**Note:** Centrifuge before opening to ensure complete recovery of vial contents.

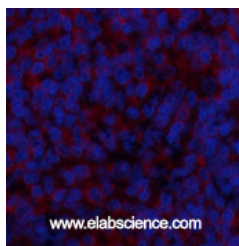
### Images



Western Blot analysis of HepG2-UV, L929 cells using BMP2 Polyclonal Antibody at dilution of 1:1000.



Immunohistochemistry of paraffin-embedded Rat lung tissue using BMP2 Polyclonal Antibody at dilution of 1:200.



Immunofluorescence analysis of Rat spleen tissue using BMP2 Polyclonal Antibody at dilution of 1:200.

### Immunogen Information

<b>Immunogen</b>	Synthesized peptide derived from the C-terminal region of human BMP-2.
<b>Swissprot</b>	P12643
<b>Synonyms</b>	BMP2,BMP2A,Bone morphogenetic protein 2,BMP-2,Bone morphogenetic protein 2A,BMP-2A

### Product Information

<b>Calculated MW</b>	45kDa
<b>Observed MW</b>	44kDa
<b>Buffer</b>	PBS with 0.02% sodium azide,0.5% BSA and 50% glycerol pH 7.4.
<b>Purify</b>	Affinity purification
<b>Dilution</b>	WB 1:500-1:2000, IHC 1:100-1:300 ELISA 1:10000

### Background

This gene encodes a member of the transforming growth factor-beta (TGFB) superfamily. The encoded preproprotein is proteolytically processed to generate each subunit of the disulfide-linked homodimer, which induces bone and cartilage formation.

#### For Research Use Only

Thank you for your recent purchase.  
 If you would like to learn more about antibodies, please visit [www.elabscience.com](http://www.elabscience.com).

#### Focus on your research Service for life science

Applications:WB-Western Blot IHC-Immunohistochemistry IF-Immunofluorescence IP-Immunoprecipitation FC-Flow cytometry ChIP-Chromatin Immunoprecipitation Reactivity: H-Human R-Rat M-Mouse Mk-Monkey Dg-Dog Ch-Chicken Hm-Hamster Rb-Rabbit Sh-Sheep Pg-Pig Z-Zebrafish X-Xenopus C-Cow.