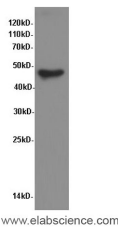


SMAD3 Polyclonal Antibody

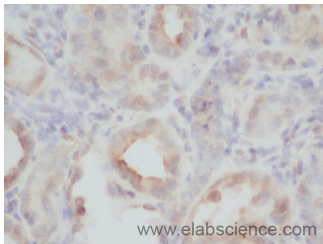
Catalog No.	E-AB-40050	Reactivity	H,R
Storage	Store at -20°C. Avoid freeze / thaw cycles.	Host	Rabbit
Applications	WB,IHC	Isotype	IgG

Note: Centrifuge before opening to ensure complete recovery of vial contents.

Images



Western Blot analysis of A549 cells using Smad3 Polyclonal Antibody at dilution of 1:600



Immunohistochemistry of paraffin-embedded Rat kidney using Smad3 Polyclonal Antibody at dilution of 1:50

Immunogen Information

Immunogen	Recombinant human Mothers against decapentaplegic homolog 3 protein
Gene Accession	NP_005893
Swissprot	P84022
Synonyms	HSPC193, HST17436, LDS3, Mad protein homolog, MAD, MADH3, SMA and MAD related protein 3, SMAD family member 3,SMAD,Smad3

Product Information

Calculated MW	48kDa
Observed MW	58kDa
Buffer	PBS with 0.05% Proclin300 and 50% glycerol, pH7.4.
Purify	Affinity purification
Dilution	WB 1:500-1:1000, IHC 1:50-1:100

Background

Receptor-regulated SMAD (R-SMAD) that is an intracellular signal transducer and transcriptional modulator activated by TGF-beta (transforming growth factor) and activin type 1 receptor kinases. Binds the TRE element in the promoter region of many genes that are regulated by TGF-beta and, on formation of the SMAD3/SMAD4 complex, activates transcription. Also can form a SMAD3/SMAD4/JUN/FOS complex at the AP-1/SMAD site to regulate TGF-beta-mediated transcription. Has an inhibitory effect on wound healing probably by modulating both growth and migration of primary keratinocytes and by altering the TGF-mediated chemotaxis of monocytes. This effect on wound healing appears to be hormone-sensitive. Regulator of chondrogenesis and osteogenesis and inhibits early healing of bone fractures. Positively regulates PDPK1 kinase activity by stimulating its dissociation from the 14-3-3 protein YWHAQ which acts as a negative regulator.

For Research Use Only

Thank you for your recent purchase.
 If you would like to learn more about antibodies, please visit www.elabscience.com.

**Focus on your research
 Service for life science**

Applications:WB-Western Blot IHC-Immunohistochemistry IF-Immunofluorescence IP-Immunoprecipitation FC-Flow cytometry ChIP-Chromatin Immunoprecipitation Reactivity: H-Human R-Rat M-Mouse Mk-Monkey Dg-Dog Ch-Chicken Hm-Hamster Rb-Rabbit Sh-Sheep Pg-Pig Z-Zebrafish X-Xenopus C-Cow.