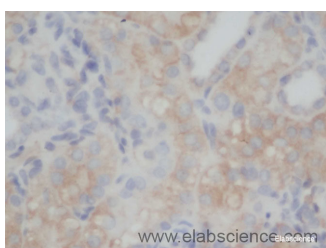


CD70 Polyclonal Antibody

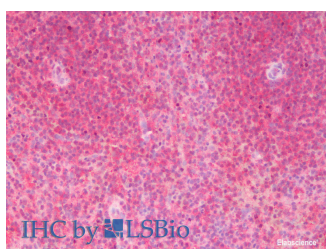
Catalog No.	E-AB-40053	Reactivity	H,R
Storage	Store at -20°C. Avoid freeze / thaw cycles.	Host	Rabbit
Applications	IHC	Isotype	IgG

Note: Centrifuge before opening to ensure complete recovery of vial contents.

Images



Immunohistochemistry of paraffin-embedded Rat kidney using CD70 Polyclonal Antibody at dilution of 1:50



Immunohistochemistry analysis of paraffin-embedded Human Spleen using CD70 Polyclonal Antibody(Elabscience® Product Detected by Lifespan).

Immunogen Information

Immunogen	Recombinant human CD70 antigen protein
Gene Accession	NP_001243
Swissprot	P32970
Synonyms	CD27 ligand, CD27L, CD70, CD70 antigen, CD70 molecule, Ki24 antigen, Surface antigen CD70, TNFSF7, Tumor necrosis factor ligand superfamily member 7

Product Information

Buffer	PBS with 0.02% sodium azide and 50% glycerol pH 7.4.
Purify	Affinity purification
Dilution	IHC 1:50-1:100

Background

Cytokine that binds to CD27. Plays a role in T-cell activation. Induces the proliferation of costimulated T-cells and enhances the generation of cytolytic T-cells.

For Research Use Only

Thank you for your recent purchase.
 If you would like to learn more about antibodies, please visit www.elabscience.com.

**Focus on your research
 Service for life science**

Applications:WB-Western Blot IHC-Immunohistochemistry IF-Immunofluorescence IP-Immunoprecipitation FC-Flow cytometry ChIP-Chromatin Immunoprecipitation Reactivity: H-Human R-Rat M-Mouse Mk-Monkey Dg-Dog Ch-Chicken Hm-Hamster Rb-Rabbit Sh-Sheep Pg-Pig Z-Zebrafish X-Xenopus C-Cow.