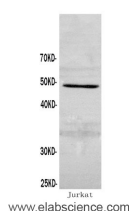


## CASP2 Polyclonal Antibody

<b>Catalog No.</b>	E-AB-40077	<b>Reactivity</b>	H
<b>Storage</b>	Store at -20°C. Avoid freeze / thaw cycles.	<b>Host</b>	Rabbit
<b>Applications</b>	WB	<b>Isotype</b>	IgG

**Note:** Centrifuge before opening to ensure complete recovery of vial contents.

### Images



Western Blot analysis of Jurkat cells using Casp2 Polyclonal Antibody at dilution of 1:600

### Immunogen Information

<b>Immunogen</b>	Recombinant Human Caspase-2 protein
<b>Swissprot</b>	P42575
<b>Synonyms</b>	CASP 2, CASP-2, Casp2, Caspase 2, , ICH 1, ICH 1 protease, ICH 1L, ICH1, ICH1 protease, ICH1L, NEDD-2, NEDD2, PPP1R57, Protease ICH-1

### Product Information

<b>Calculated MW</b>	49 kDa
<b>Observed MW</b>	49 kDa
<b>Buffer</b>	PBS with 0.05% Proclin300 and 50% glycerol, pH7.4.
<b>Purify</b>	Affinity purification
<b>Dilution</b>	WB 1:500-1:1000

### Background

Involved in the activation cascade of caspases responsible for apoptosis execution. Might function by either activating some proteins required for cell death or inactivating proteins necessary for cell survival.

#### For Research Use Only

Thank you for your recent purchase.

If you would like to learn more about antibodies, please visit [www.elabscience.com](http://www.elabscience.com).

**Focus on your research  
 Service for life science**

Applications:WB-Western Blot IHC-Immunohistochemistry IF-Immunofluorescence IP-Immunoprecipitation FC-Flow cytometry ChIP-Chromatin Immunoprecipitation Reactivity: H-Human R-Rat M-Mouse Mk-Monkey Dg-Dog Ch-Chicken Hm-Hamster Rb-Rabbit Sh-Sheep Pg-Pig Z-Zebrafish X-Xenopus C-Cow.