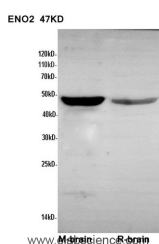


ENO2 Polyclonal Antibody

Catalog No.	E-AB-40109	Reactivity	M,R
Storage	Store at -20°C. Avoid freeze / thaw cycles.	Host	Rabbit
Applications	WB	Isotype	IgG

Note: Centrifuge before opening to ensure complete recovery of vial contents.

Images



Western Blot analysis of Mouse liver and Rat liver using ENO2 Polyclonal Antibody at dilution of 1:600

Immunogen Information

Immunogen	Recombinant Mouse Gamma-enolase protein
Swissprot	P17183
Synonyms	2-phospho-D-glycerate hydro-lyase,Eno2,ENOG,Enolase 2,Enolase2,Gamma enolase,Gamma-enolase,HEL S 279,Neural enolase,Neuron specific enolase,Neuron specific gamma enolase,Neurone specific enolase,NSE

Product Information

Calculated MW	47KD
Observed MW	47KD
Buffer	PBS with 0.02% sodium azide, 50% glycerol, pH7.3.
Purify	Affinity purification
Dilution	WB 1:500-1:1000

Background

Has neurotrophic and neuroprotective properties on a broad spectrum of central nervous system (CNS) neurons. Binds, in a calcium-dependent manner, to cultured neocortical neurons and promotes cell survival (By similarity).

For Research Use Only

Thank you for your recent purchase.

If you would like to learn more about antibodies, please visit www.elabscience.com.

**Focus on your research
 Service for life science**

Applications:WB-Western Blot IHC-Immunohistochemistry IF-Immunofluorescence IP-Immunoprecipitation FC-Flow cytometry ChIP-Chromatin Immunoprecipitation Reactivity: H-Human R-Rat M-Mouse Mk-Monkey Dg-Dog Ch-Chicken Hm-Hamster Rb-Rabbit Sh-Sheep Pg-Pig Z-Zebrafish X-Xenopus C-Cow.