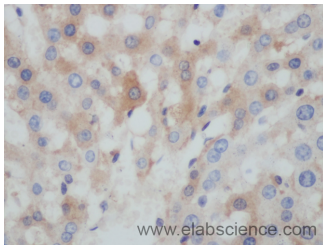


## BCL2L15 Polyclonal Antibody

<b>Catalog No.</b>	E-AB-40115	<b>Reactivity</b>	R
<b>Storage</b>	Store at -20°C. Avoid freeze / thaw cycles.	<b>Host</b>	Rabbit
<b>Applications</b>	IHC	<b>Isotype</b>	IgG

**Note:** Centrifuge before opening to ensure complete recovery of vial contents.

### Images



Immunohistochemistry of paraffin-embedded Rat liver using BCL2L15 Polyclonal Antibody at dilution of 1:50

### Immunogen Information

<b>Immunogen</b>	Recombinant human Bcl-2-like protein 15 protein
<b>Swissprot</b>	Q5TBC7
<b>Synonyms</b>	B2L15,Bcl-2-like protein 15,Bcl2-L-15,BCL2-like 15,Bcl2l15,Bfk,C1orf178,FLJ22588,Gm566,Pro apoptotic Bcl 2 protein

### Product Information

<b>Buffer</b>	PBS with 0.02% sodium azide, 50% glycerol, pH7.3.
<b>Purify</b>	Affinity purification
<b>Dilution</b>	IHC 1:50-1:100

### Background

BCL2L15 (BCL2 Like 15) is a Protein Coding gene. Among its related pathways are Regulation of Apoptosis by Parathyroid Hormone-related Protein.

#### For Research Use Only

Thank you for your recent purchase.

If you would like to learn more about antibodies, please visit [www.elabscience.com](http://www.elabscience.com).

**Focus on your research  
Service for life science**

Applications:WB-Western Blot IHC-Immunohistochemistry IF-Immunofluorescence IP-Immunoprecipitation FC-Flow cytometry ChIP-Chromatin Immunoprecipitation Reactivity: H-Human R-Rat M-Mouse Mk-Monkey Dg-Dog Ch-Chicken Hm-Hamster Rb-Rabbit Sh-Sheep Pg-Pig Z-Zebrafish X-Xenopus C-Cow.