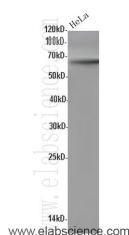


CDC40 Polyclonal Antibody

Catalog No.	E-AB-40140	Reactivity	H
Storage	Store at -20°C. Avoid freeze / thaw cycles.	Host	Rabbit
Applications	WB	Isotype	IgG

Note: Centrifuge before opening to ensure complete recovery of vial contents.

Images



Western Blot analysis of HeLa cells using CDC40 Polyclonal Antibody at dilution of 1:600

Immunogen Information

Immunogen	Recombinant human CDC40 protein
Swissprot	O60508
Synonyms	Cdc40,EH binding protein 3,hPRP17,PRP17,PRP17 homolog,PRP17_HUMAN,PRPF17

Product Information

Calculated MW	66KDa
Observed MW	66KDa
Buffer	PBS with 0.05% Proclin300 and 50% glycerol, pH7.4.
Purify	Affinity purification
Dilution	WB 1:500-1:1000

Background

Associates with the spliceosome late in the splicing pathway and may function in the second step of pre-mRNA splicing.

For Research Use Only

Thank you for your recent purchase.

If you would like to learn more about antibodies, please visit www.elabscience.com.

**Focus on your research
 Service for life science**

Applications:WB-Western Blot IHC-Immunohistochemistry IF-Immunofluorescence IP-Immunoprecipitation FC-Flow cytometry ChIP-Chromatin Immunoprecipitation Reactivity: H-Human R-Rat M-Mouse Mk-Monkey Dg-Dog Ch-Chicken Hm-Hamster Rb-Rabbit Sh-Sheep Pg-Pig Z-Zebrafish X-Xenopus C-Cow.