

ALPL Polyclonal Antibody

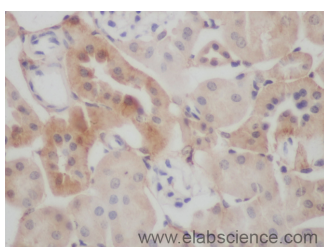
Catalog No.	E-AB-40142	Reactivity	H,M,R
Storage	Store at -20°C. Avoid freeze / thaw cycles.	Host	Rabbit
Applications	WB,IHC	Isotype	IgG

Note: Centrifuge before opening to ensure complete recovery of vial contents.

Images



Western Blot analysis of Mouse liver, A431 and MCF7 cells using ALPL Polyclonal Antibody at dilution of 1:600



Immunohistochemistry of paraffin-embedded Rat kidney using ALPL Polyclonal Antibody at dilution of 1:50

Immunogen Information

Immunogen	Recombinant human ALpp protein
Swissprot	P05186
Synonyms	Alkaline phosphatase, Alkaline phosphatase placental, ALP, Alp1, ALPP, FLJ61142, nagao isozyme, OTTHUMP00000164354, PALP, PLAP, PLAP-1, PLA P1, PPB1_HUMAN

Product Information

Calculated MW	58KDa
Observed MW	68KDa
Buffer	PBS with 0.05% Proclin300 and 50% glycerol, pH7.4.
Purify	Affinity purification
Dilution	WB 1:500-1:1000, IHC 1:50-1:100

Background

A phosphate monoester + H₂O = an alcohol + phosphate.

For Research Use Only

Thank you for your recent purchase.

If you would like to learn more about antibodies, please visit www.elabscience.com.

**Focus on your research
 Service for life science**

Applications: WB-Western Blot IHC-Immunohistochemistry IF-Immunofluorescence IP-Immunoprecipitation FC-Flow cytometry ChIP-Chromatin Immunoprecipitation Reactivity: H-Human R-Rat M-Mouse Mk-Monkey Dg-Dog Ch-Chicken Hm-Hamster Rb-Rabbit Sh-Sheep Pg-Pig Z-Zebrafish X-Xenopus C-Cow.