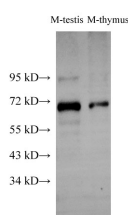


PTEN Polyclonal Antibody

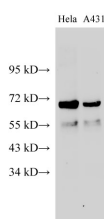
Catalog No.	E-AB-40284	Reactivity	H,M,R
Storage	Store at -20°C. Avoid freeze / thaw cycles.	Host	Rabbit
Applications	WB,IHC,IF	Isotype	IgG

Note: Centrifuge before opening to ensure complete recovery of vial contents.

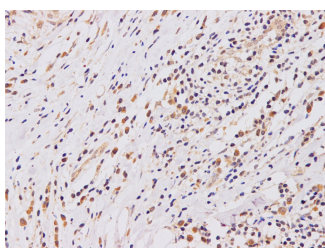
Images



Western Blot analysis of Mouse testis and Mouse thymus using PTEN Polyclonal Antibody at dilution of 1:500



Western Blot analysis of HeLa and A431 cells using PTEN Polyclonal Antibody at dilution of 1:500



Immunohistochemistry of paraffin-embedded Human breast cancer using PTEN Polyclonal Antibody at dilution of 1:100

Immunogen Information

Immunogen	Recombinant Human Phosphatidylinositol 3,4,5-trisphosphate 3-phosphatase and dual-specificity protein phosphatase PTEN protein
GeneID	5728
Swissprot	P60484
Synonyms	BZS,DEC,GLM2,MGC11227,MHAM,MMAC1,Pten,PTEN,PTEN1,TEP1

Product Information

Calculated MW	65,47,20 kDa
Observed MW	68 kDa
Buffer	PBS with 0.05% Proclin300 and 50% glycerol, pH7.4.
Purify	Antigen Affinity Purification
Dilution	WB 1:500-1:1000 IHC 1:100-1:200 IF 1:100-1:400

Background

PTEN (also designated MMAC1), products of tumor suppressor genes, are found deleted in most human gliomas. The PTEN genes are also mutated in many other tumors, such as brain, breast, kidney and prostate cancers. PTEN is a protein tyrosine phosphatase that may terminate the signaling transduction pathways mediated by PI 3-kinase/Akt. PTEN has an apparent molecular weight of 55 kDa and it is located in the cytosol.

For Research Use Only

Thank you for your recent purchase.
 If you would like to learn more about antibodies, please visit www.elabscience.com.

Focus on your research
Service for life science

Applications: WB-Western Blot IHC-Immunohistochemistry IF-Immunofluorescence IP-Immunoprecipitation FC-Flow cytometry ChIP-Chromatin Immunoprecipitation Reactivity: H-Human R-Rat M-Mouse Mk-Monkey Dg-Dog Ch-Chicken Hm-Hamster Rb-Rabbit Sh-Sheep Pg-Pig Z-Zebrafish X-Xenopus C-Cow.